



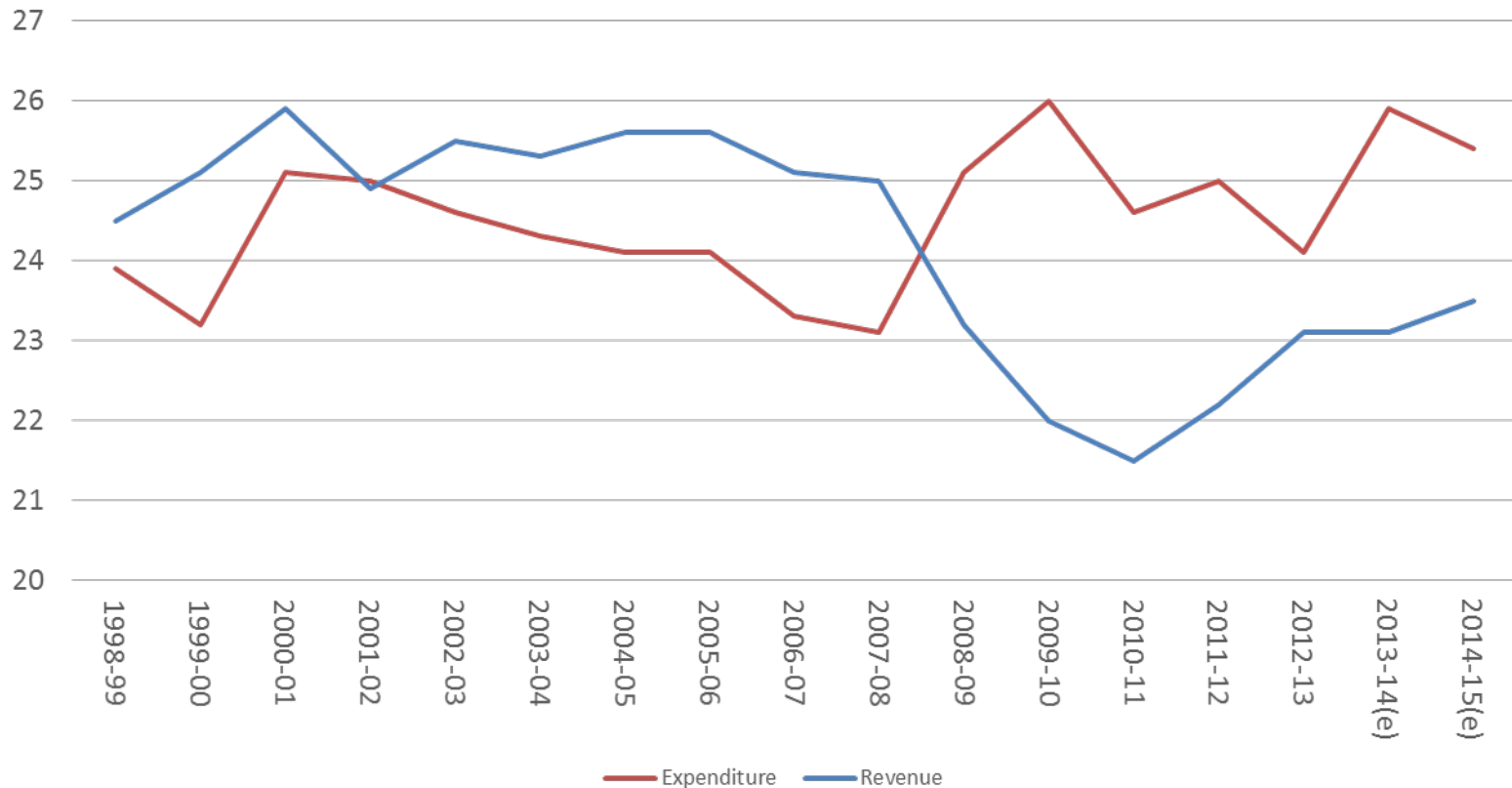
Solving real, not imagined, problems

The budget, social security and tax

Dr Cassandra Goldie, CEO ACOSS
Melbourne July 2014

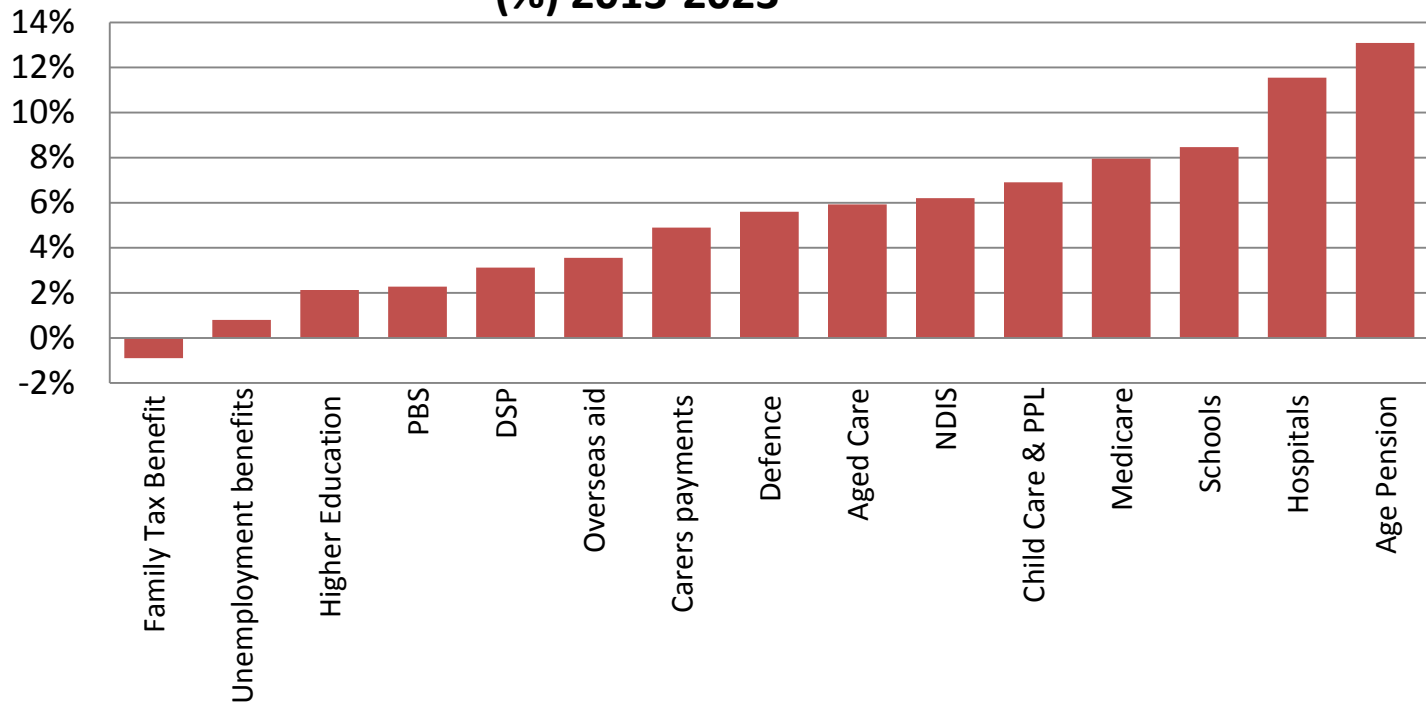
Budget decline is at least as great on the revenue side

Australian Govt revenue and expenditure
(% of GDP)

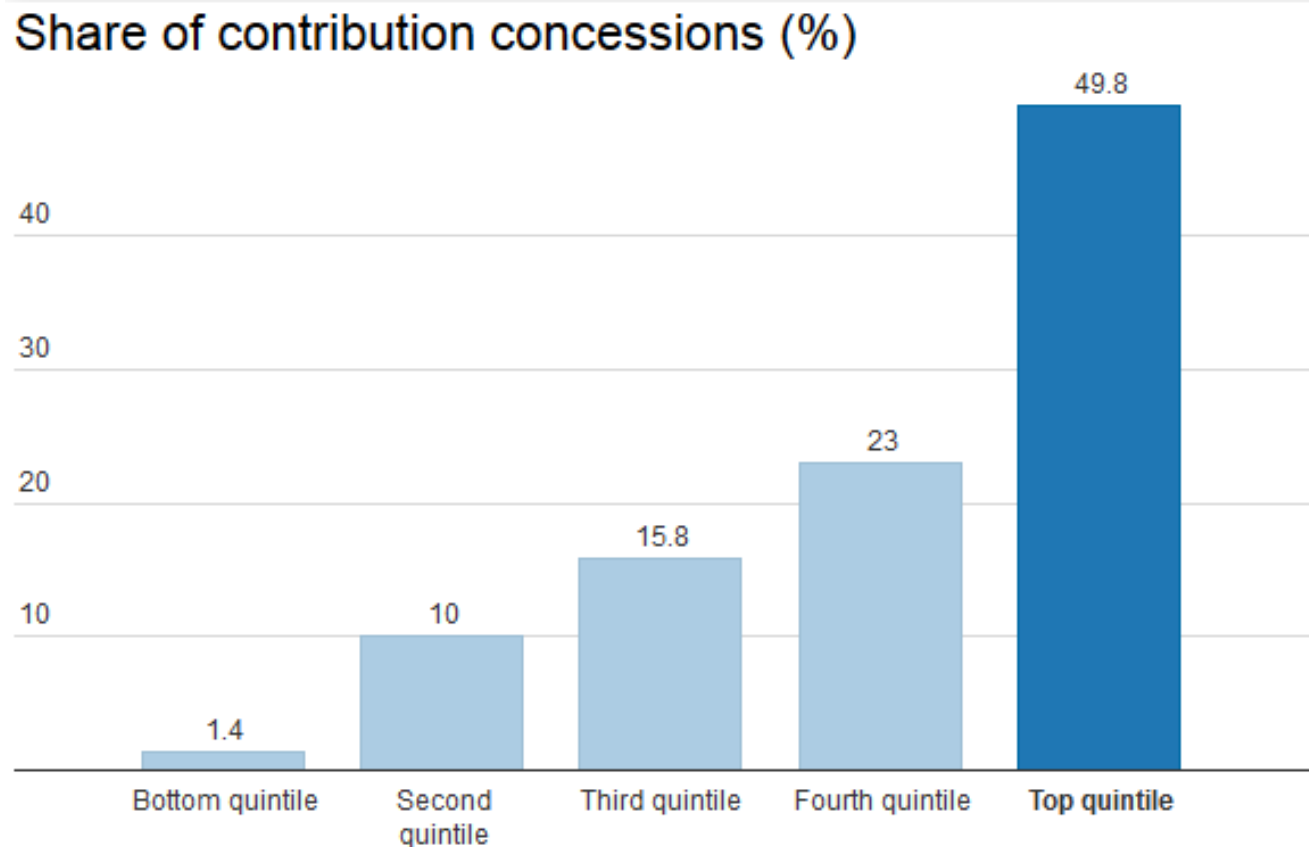


Age pension and health care, not unemployment, DSP or family payments, put the most pressure on the Budget

Contribution to all growth in spending
(%) 2013-2023

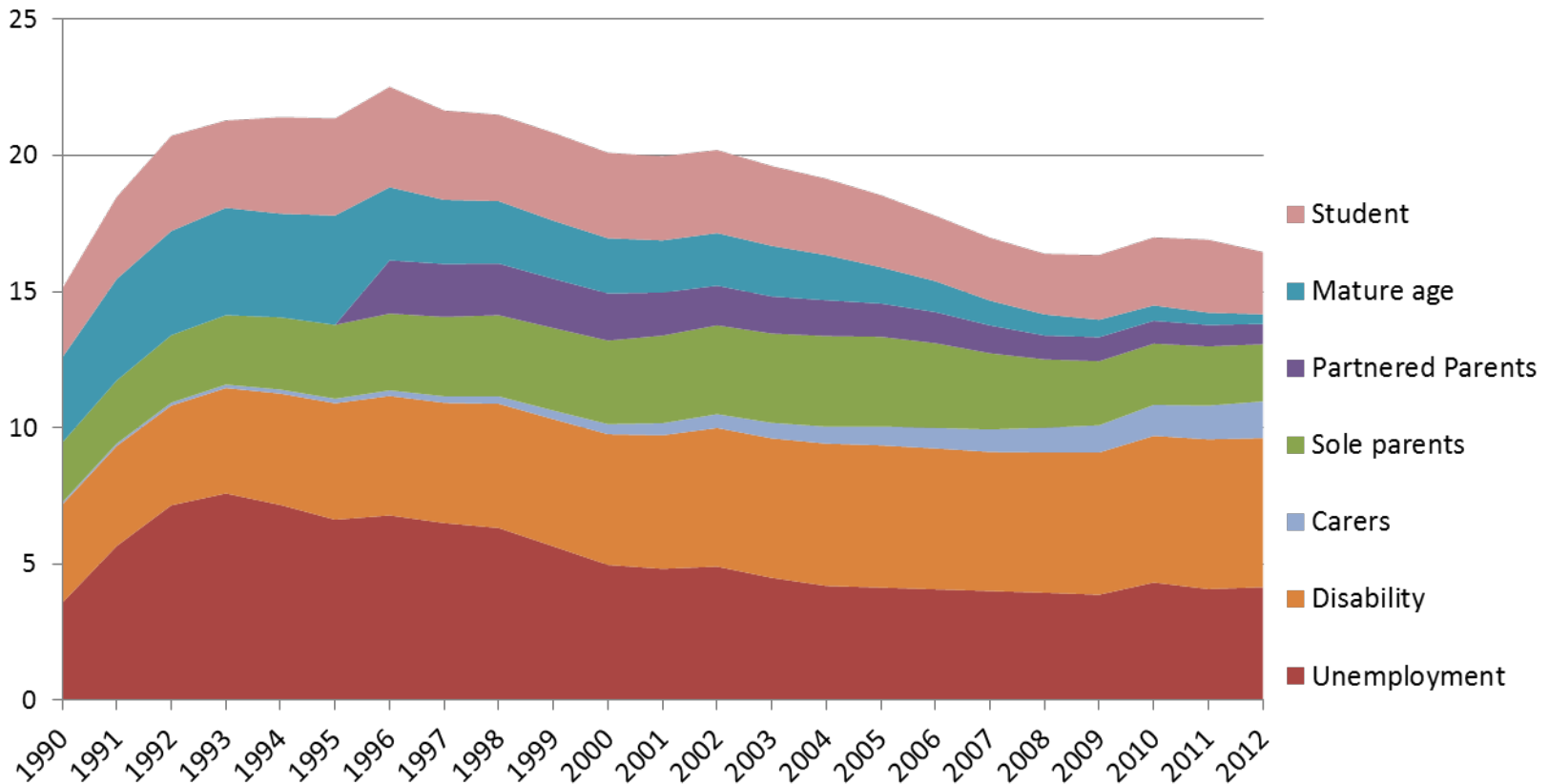


Half the \$40B in annual super tax breaks go to the top 20%



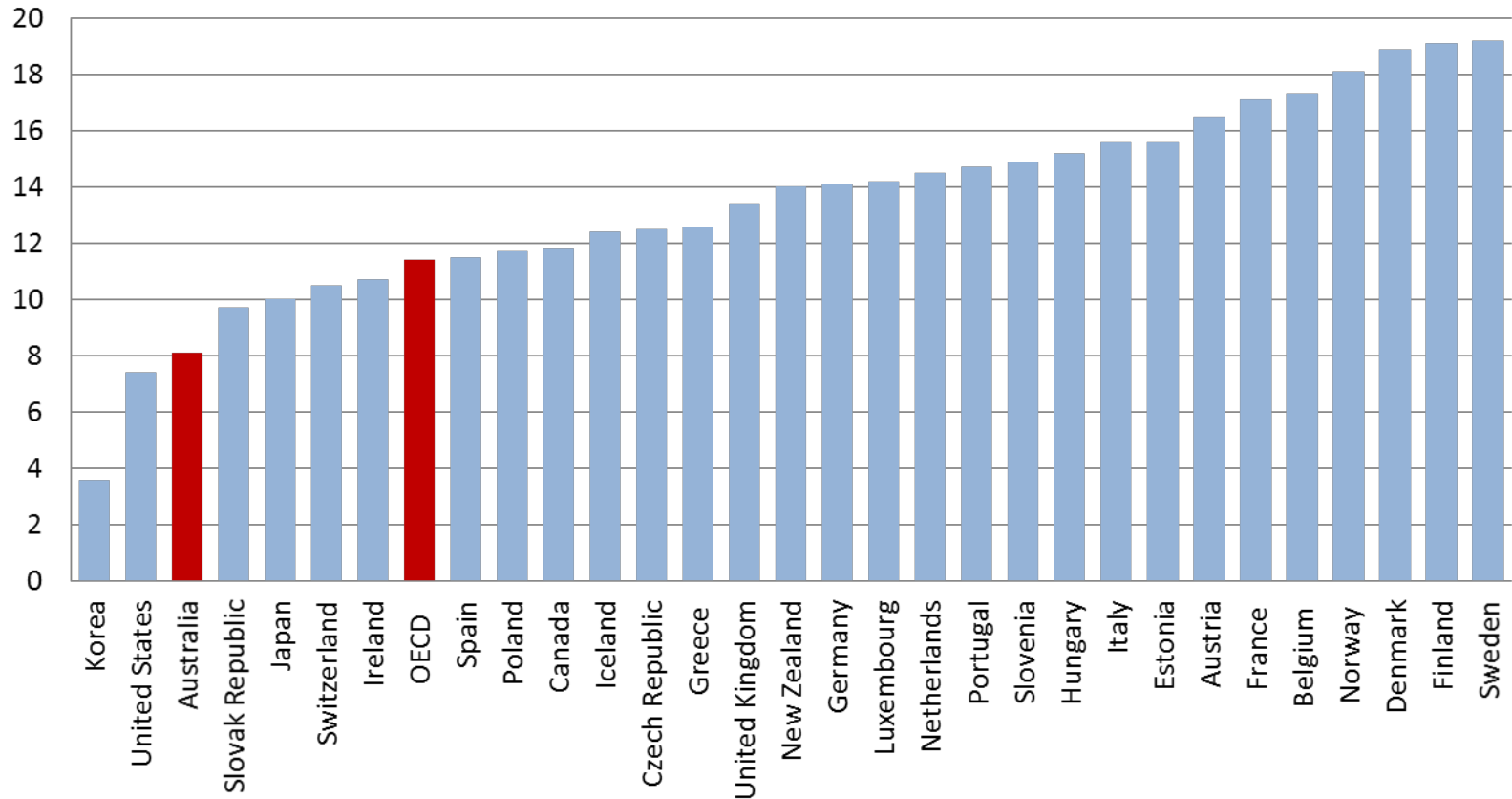
Reliance on income support has fallen

**Income support recipients
(% of people of working age)**



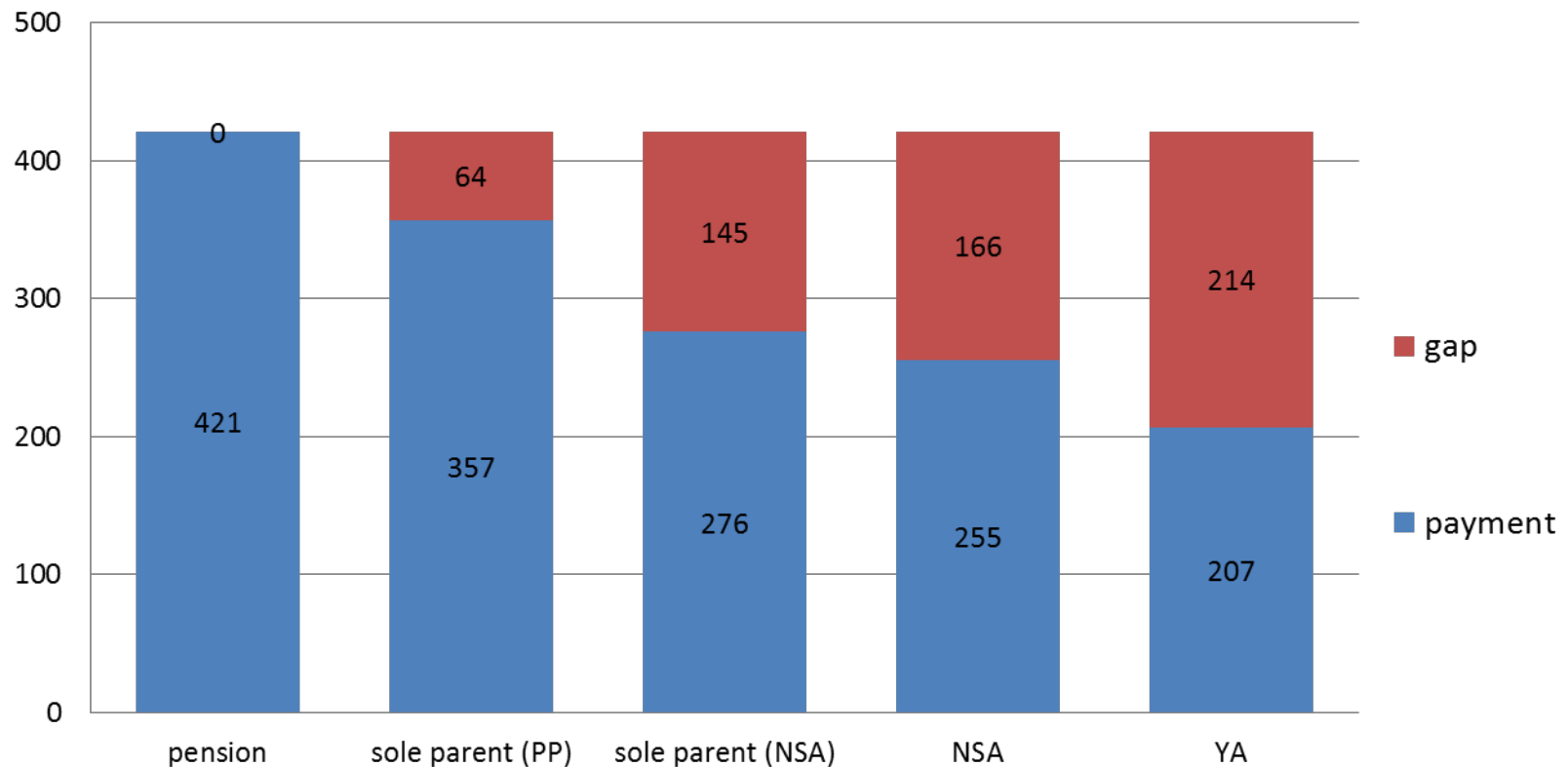
We spend less on cash benefits than almost all OECD countries

Government expenditure on cash benefits
(% of GDP in 2010)



Payment gaps are large and growing

Social security payment gaps for singles
June 2014 (\$pw)



Many people on unemployment payments face significant barriers to employment

Profile of NSA/YAO recipients
(2013 - per cent)

