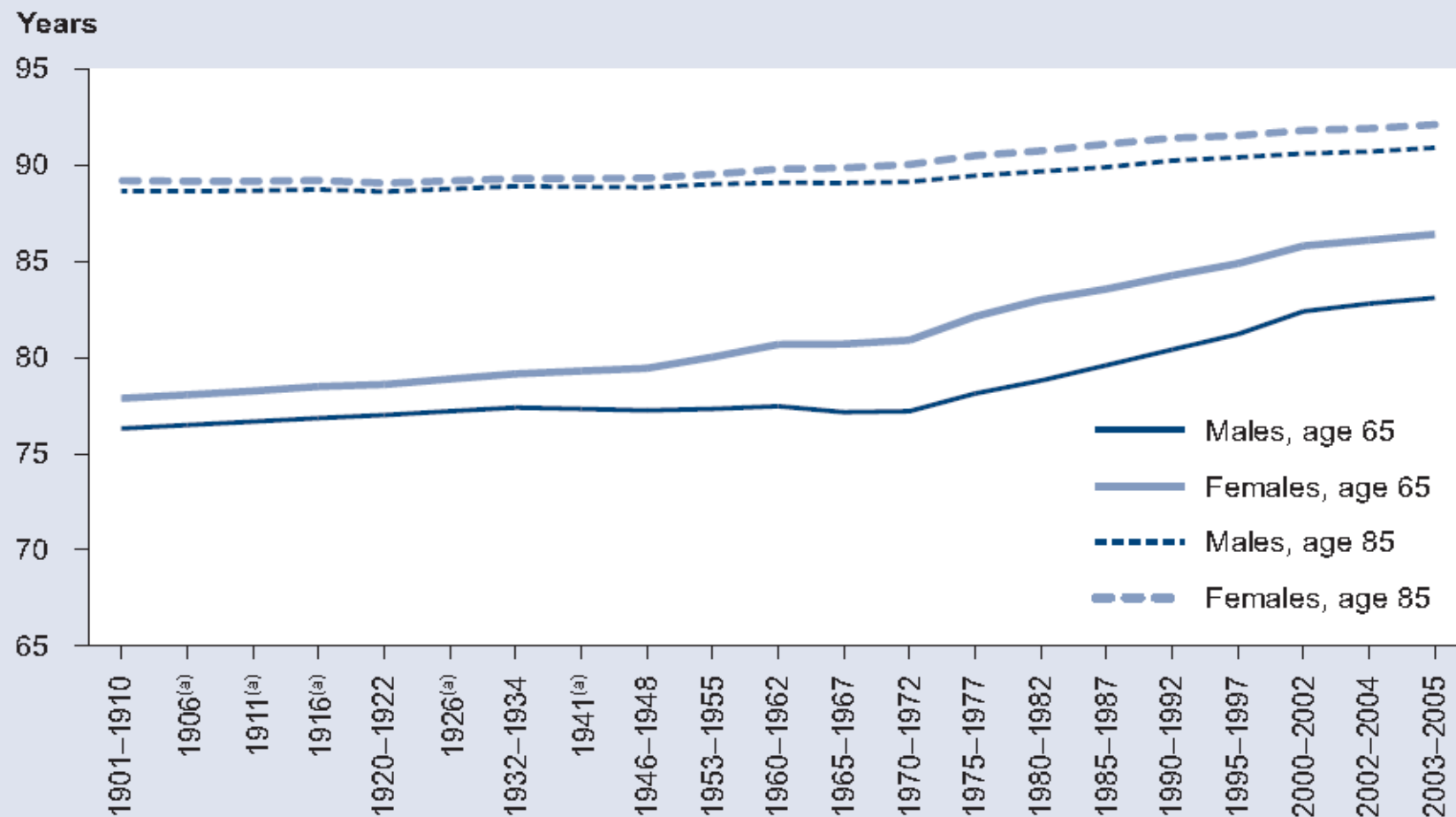


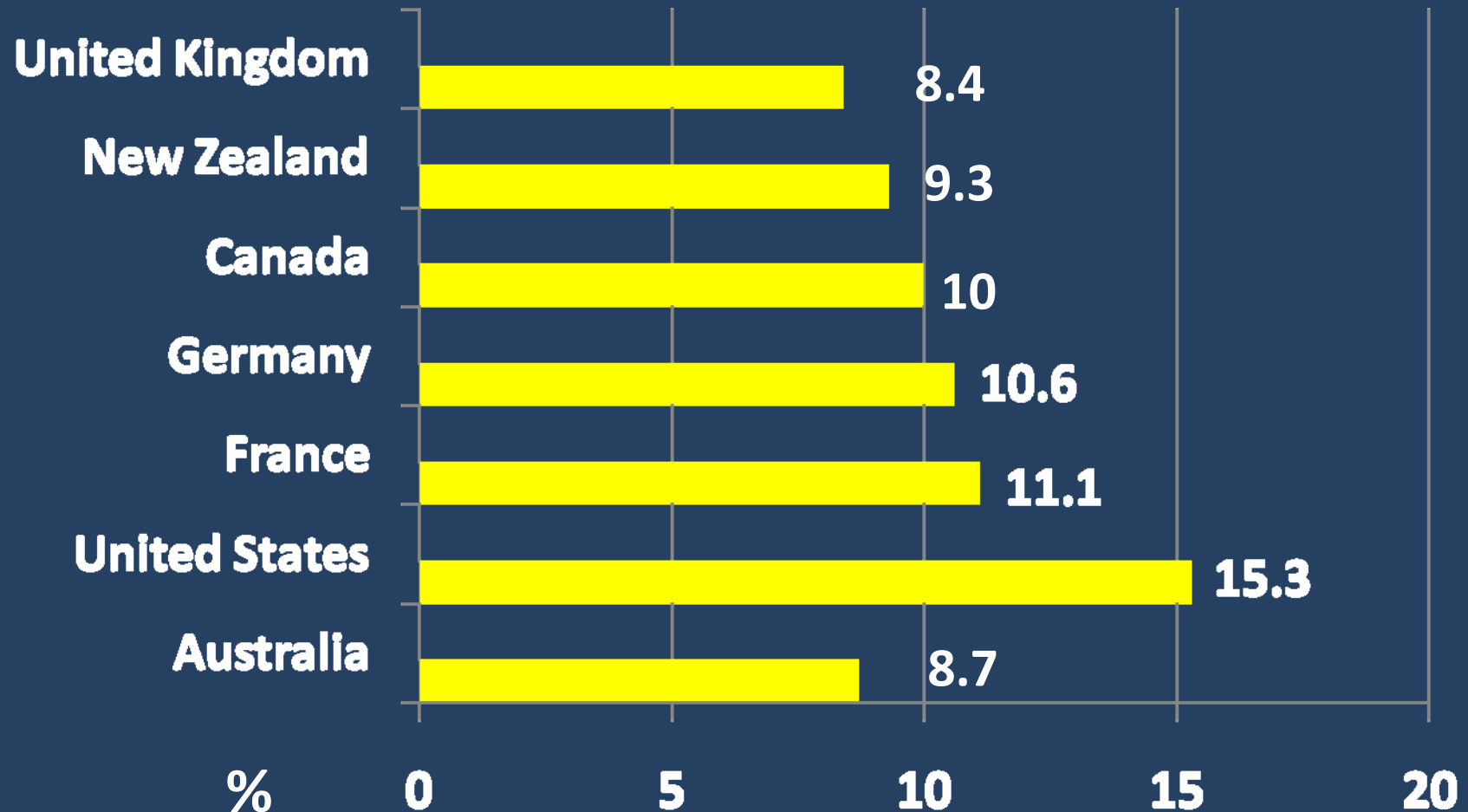
Trends in life expectancy at various ages, 1901-1910 to 2003-2005



(a) Pro-rated for missing years.

Source: AIHW population database.

Health expenditure as a proportion of GDP and per person, OECD countries, 1996 to 2006



Sources: AIHW health expenditure database; OECD 2008

**Medical services per person;
percentage changes,
1995-96 to 2007-08, by type of service**

Service	1995-96	2007-08	% change
Consults	6.57	6.18	-6
Diagnostic	3.36	5.44	+62
Procedures	0.57	0.75	+32

Medical fees charged as % of Medicare schedule

	GP	SPEC	OBSTET	ANAES	OPS
1995-96	91	103	134	114	107
2007-08	111	127	280	179	146
change	+10	+24	+146	+65	+39

Separations per 1,000 population, 1995-96 to 2007-08

Hospital type	1996	2008	% change
Public			
-overnight	115	111	-4
-same day	79	106	34
Total	192	218	13
Private			
-overnight	43	50	16
-same day	42	57	36
Total	85	107	26

Acute hospital separations per 1,000 persons covered, by type of patient, 1995–96 to 2007-08

	Public patients	Private insurance
1995-96	240	290
1998-99	260	294
2000-01	318	218
2007-08	354	304
% change	+47	+8

**Acute care hospitals
Overnight admissions per 1000
population, 2006**

Country	No.
Australia	160
Canada	99
United States	120
UK	122

