



THE UNIVERSITY OF
MELBOURNE

Economic and Social Outlook

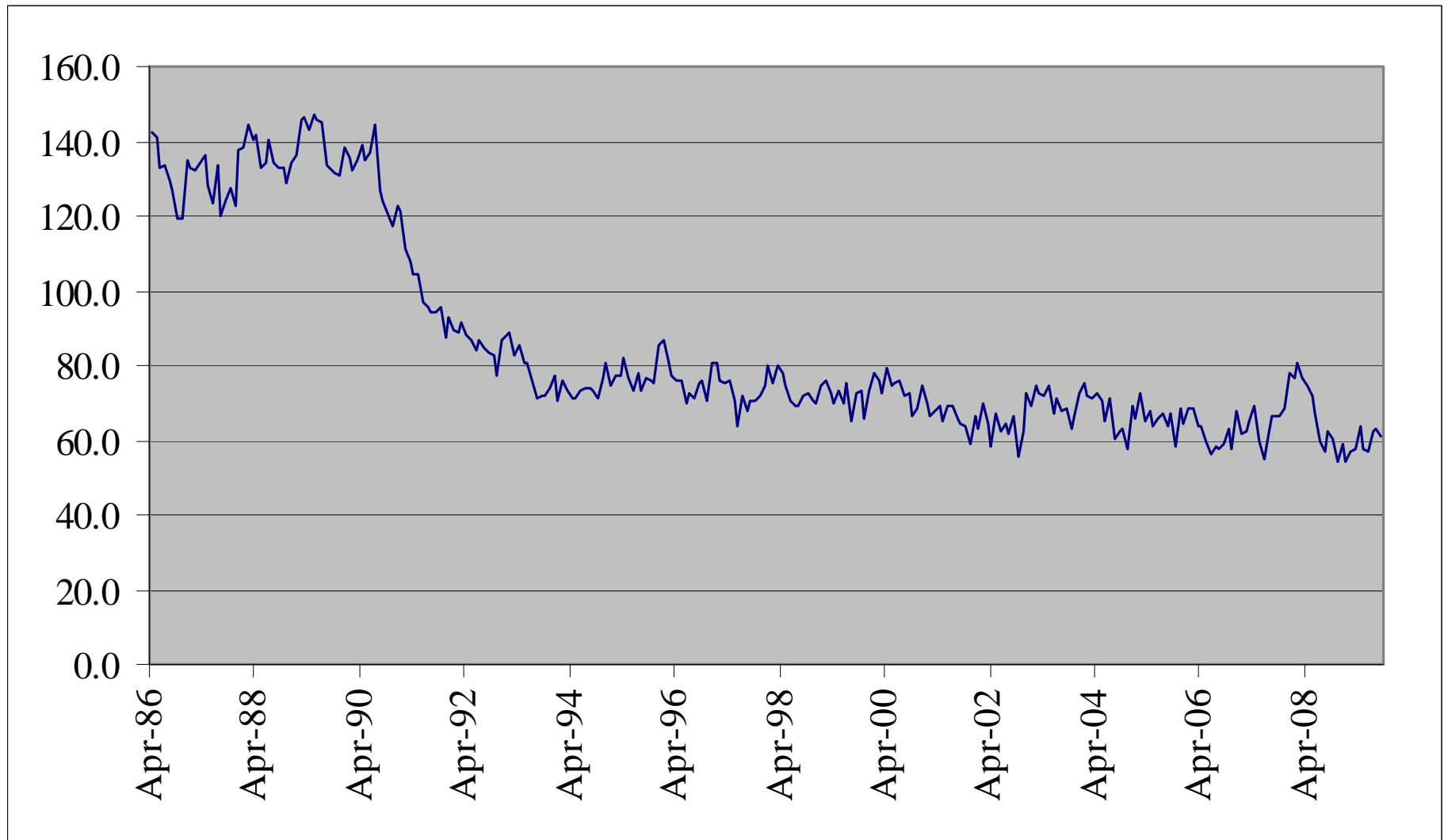
**What next in the Education
Revolution – Schooling?**



Full time employment 15-19 year olds, Australia, 1986 – 2009.

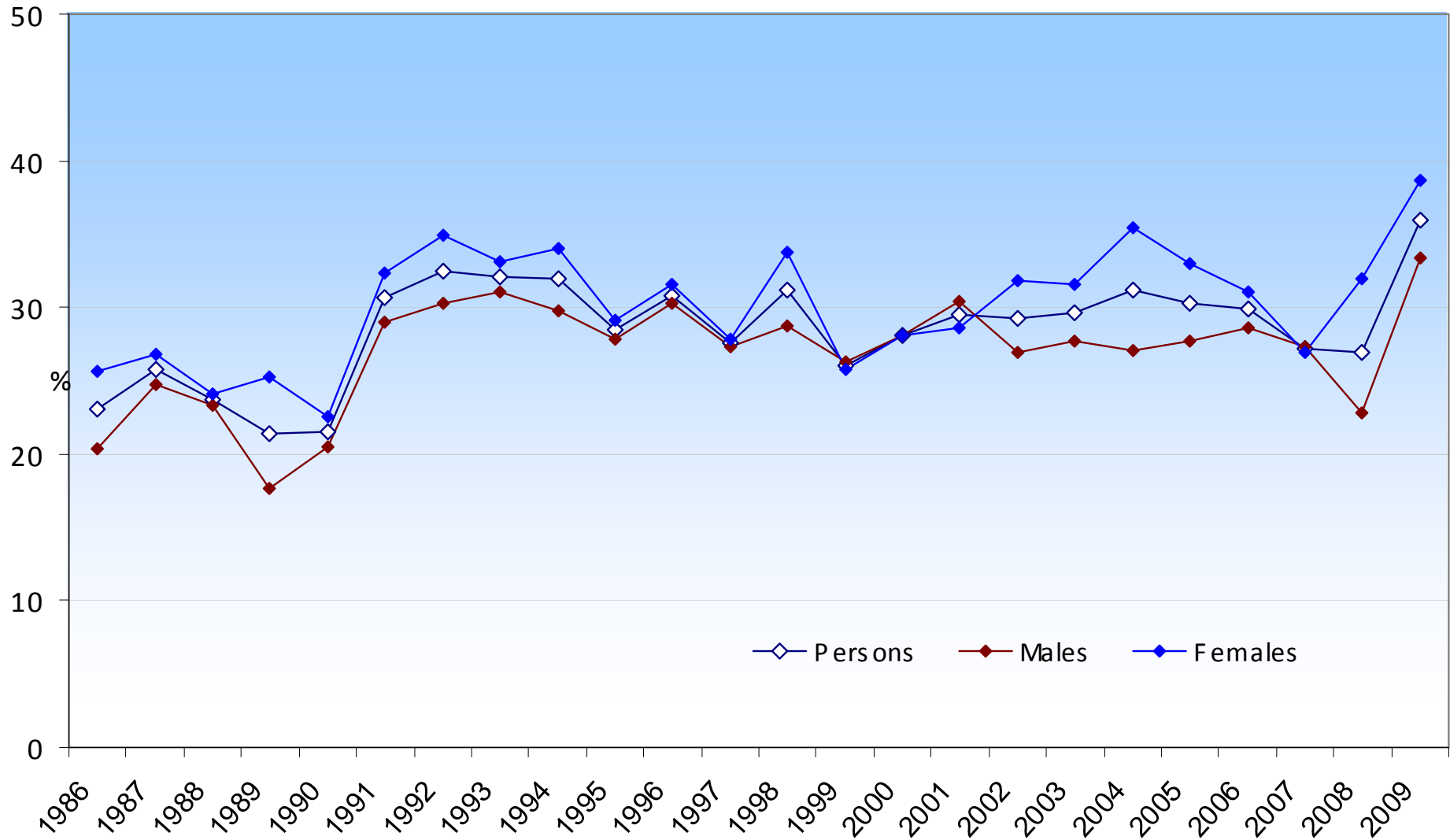


THE UNIVERSITY OF
MELBOURNE



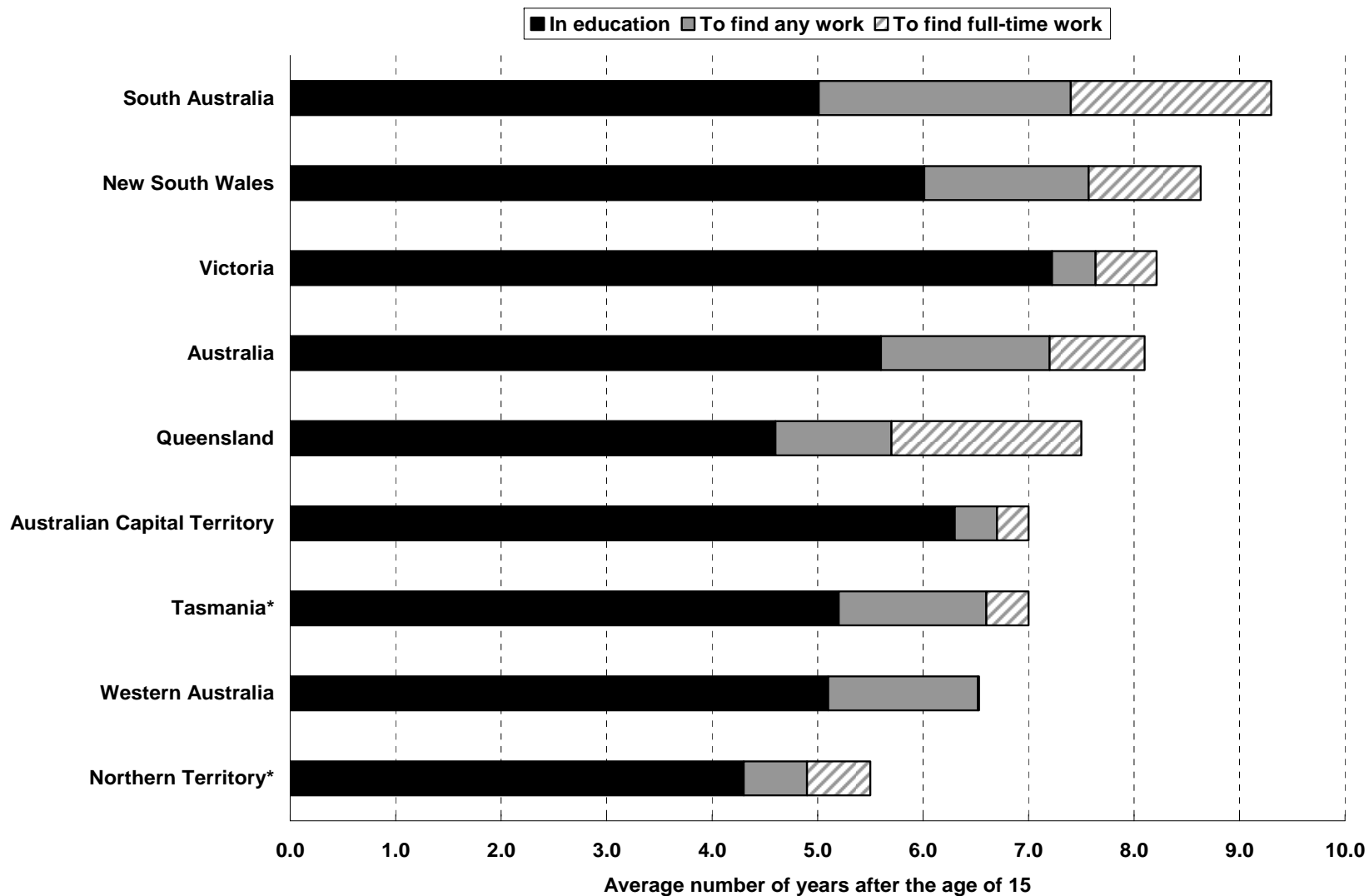
Source: ABS, Labour Force, Cat No 6202.0

Percentage of school leavers not fully engaged jumped in 2009



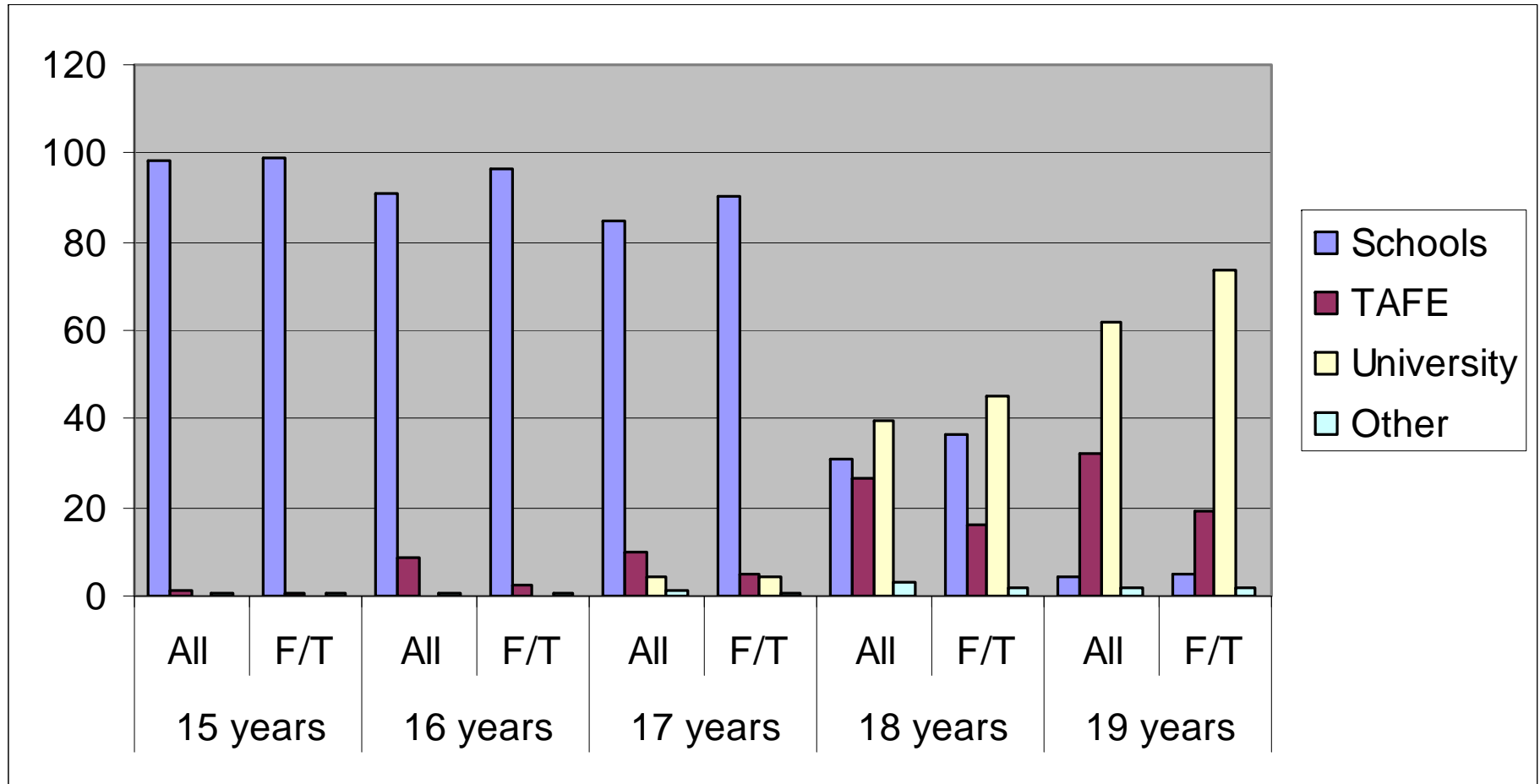
Source: FYA, HYP AF, 2009

The duration of the transition from education to work, states and territories, 2008



Source: ABS Education and Work Australia Cat. No. 6227.0, May 2008, special tabulation

Enrolment share of all and full-time students, 15-19, 2006



Source: ABS Census, 2006

An Australian Schools Resourcing Model

