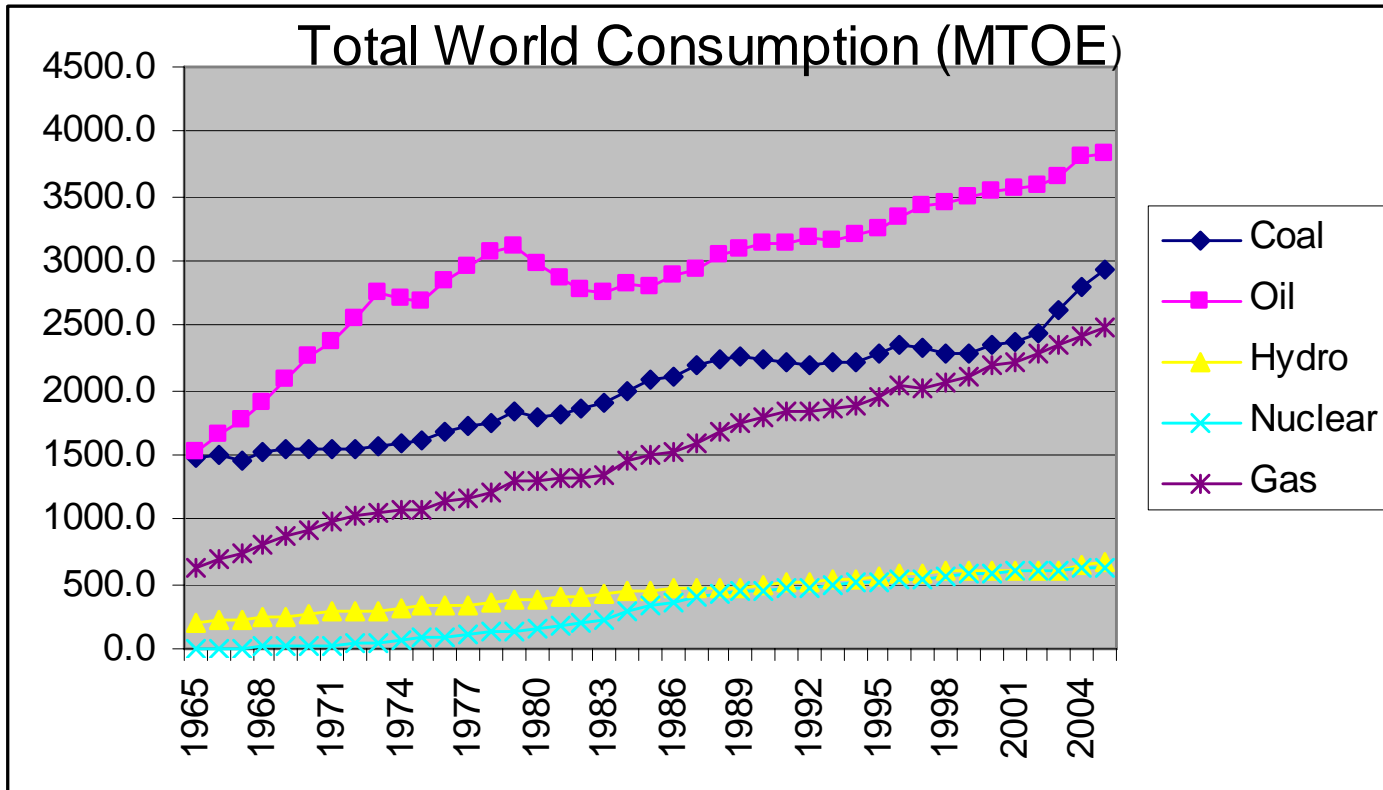
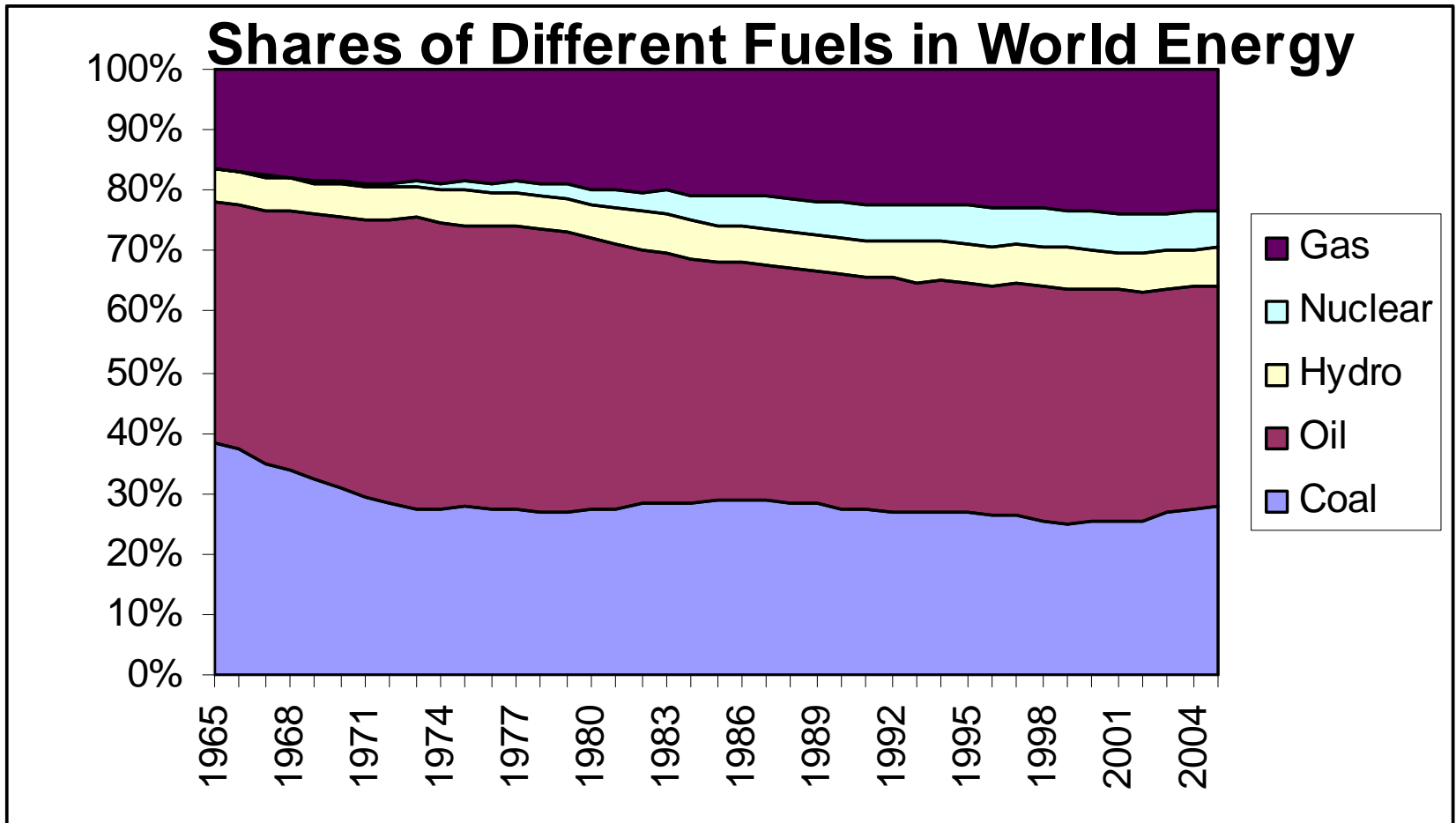
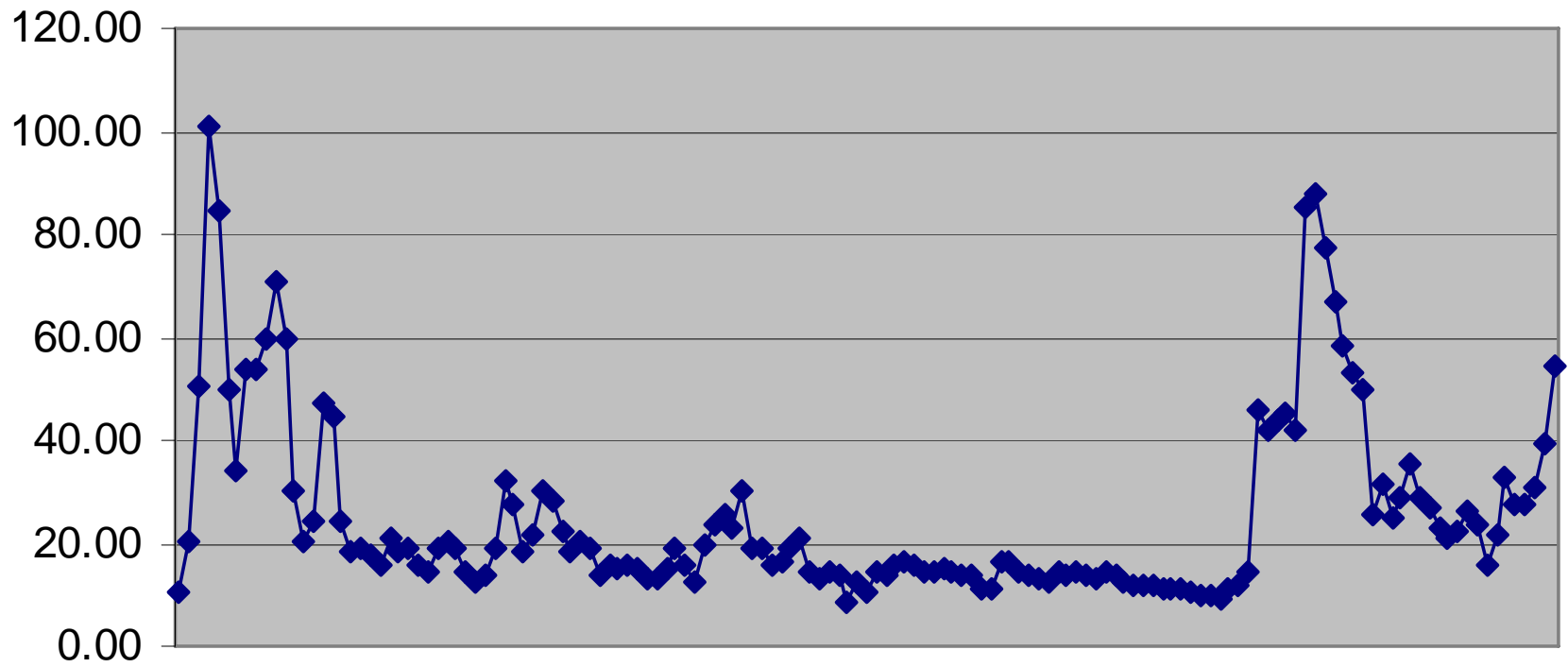


# Institute of Public Affairs

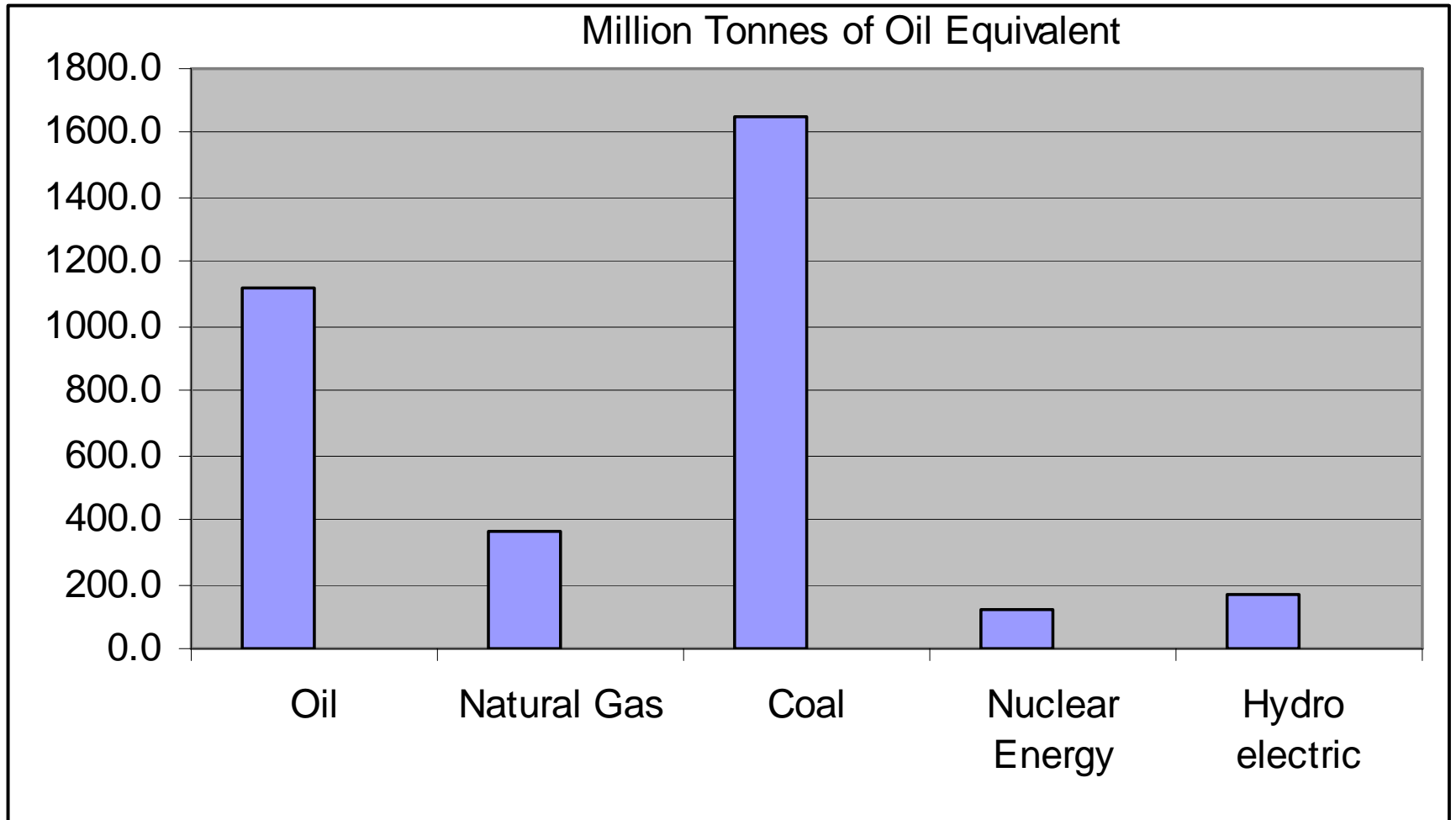




Price of Oil \$2005 1861-2005

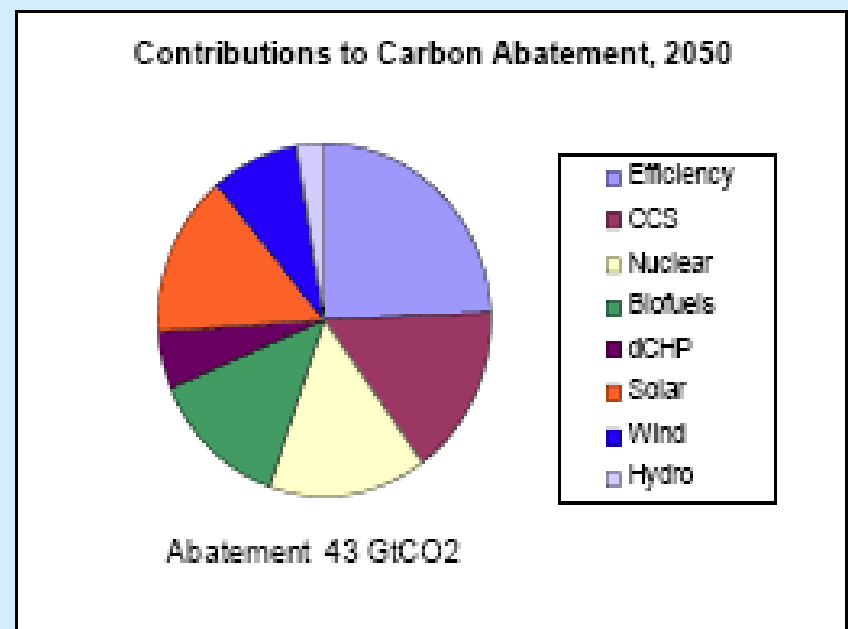
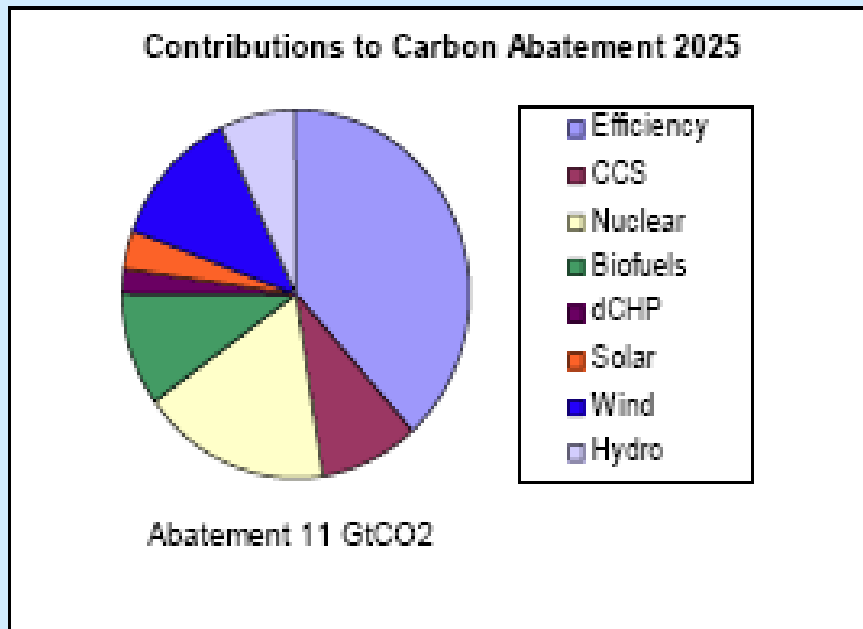


# Institute of Public Affairs CO2 Per Unit of Energy



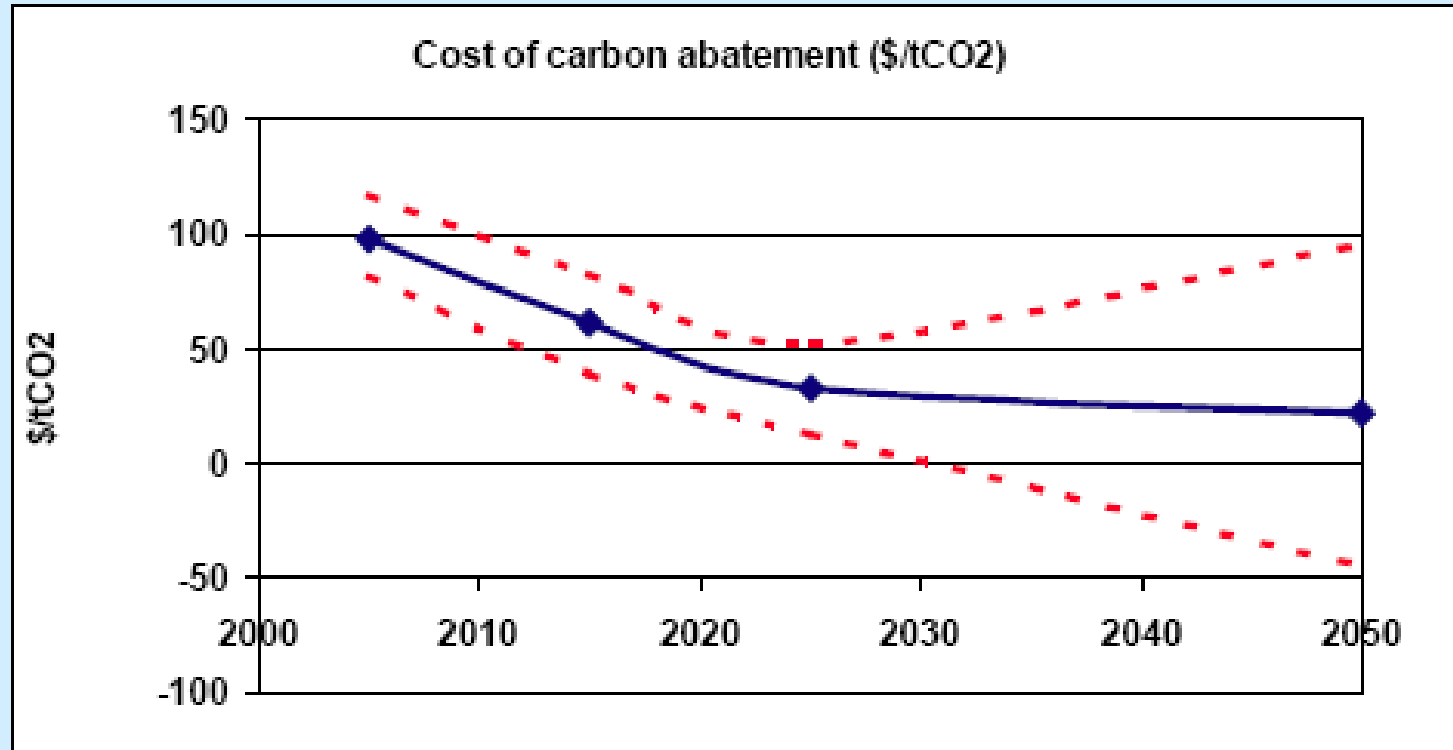
# Stern Report Energy Saving Projections

Figure 9.4 The distribution of emission savings by technology



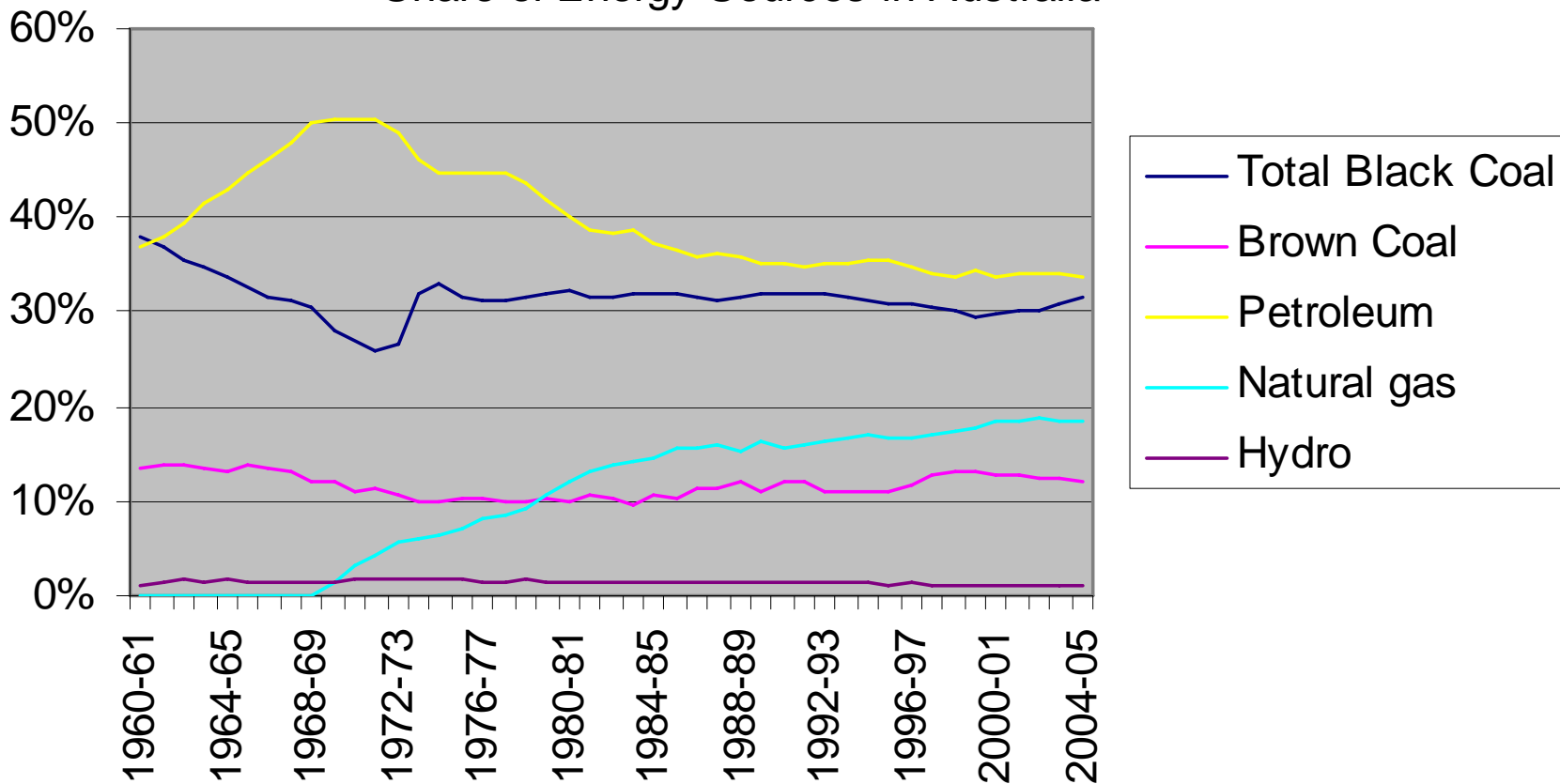
# Stern Report Carbon Tax Equivalent

Figure 9.5 Average cost of reducing fossil fuel emissions to 18 GtCO<sub>2</sub> in 2050\*



\*The red lines give uncertainty bounds around the central estimate. These have been calculated using Monte Carlo analysis. For each technology, the full range of possible costs (typically  $\pm 30\%$  for new technologies,  $\pm 20\%$  for established ones) is specified. Similarly, future oil prices are specified as probability distributions ranging from \$20 to over \$80 per barrel, as are gas prices (£2-6/GJ), coal prices and future energy demands (to allow for the uncertain rate of uptake of energy efficiency). This produces a probability distribution that is the basis for the ranges given.

### Share of Energy Sources in Australia



# Melbourne access to workplaces

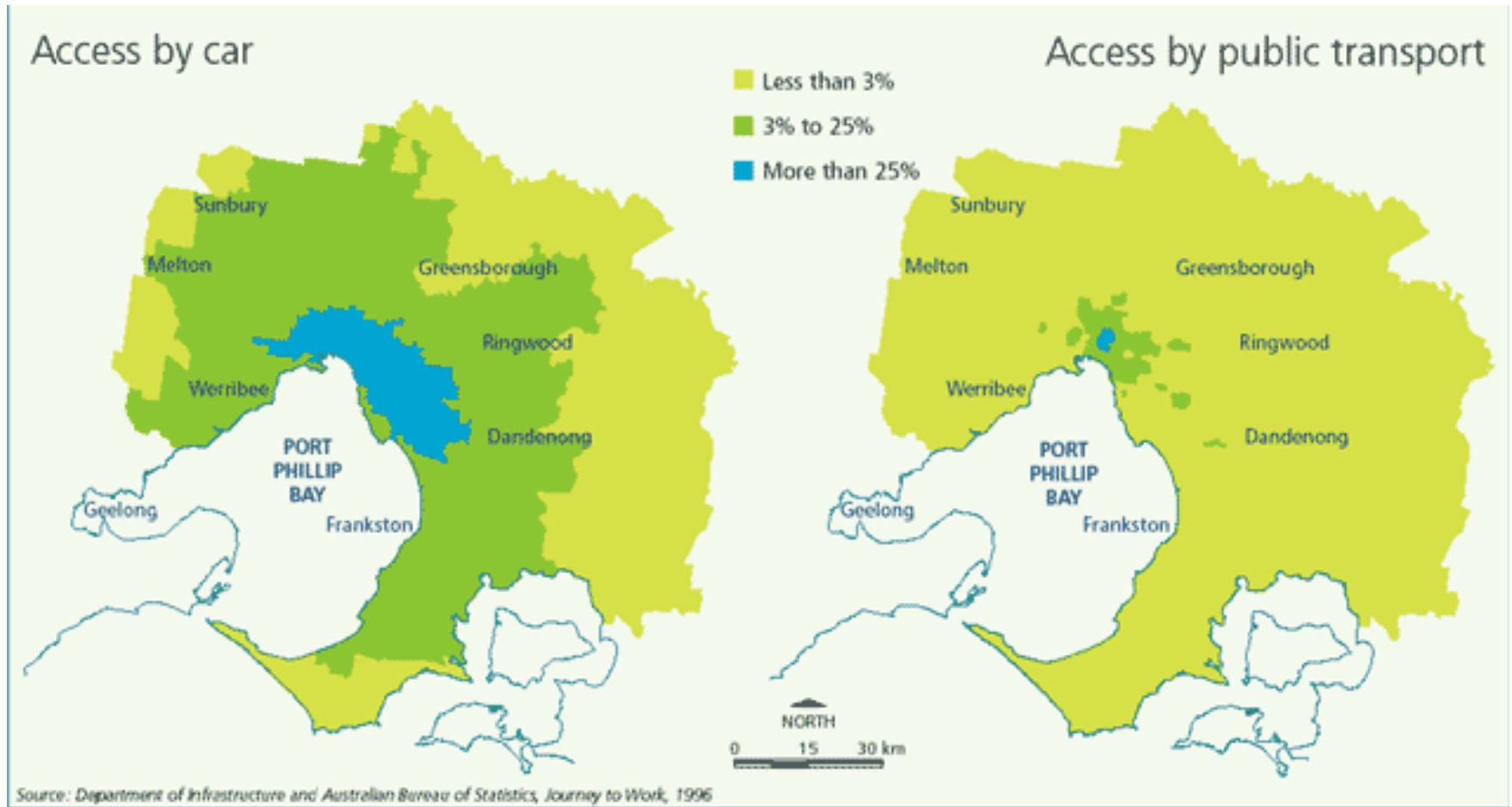


Figure 4. Percentage of jobs accessible within 40 minutes travel (by car and by public transport)



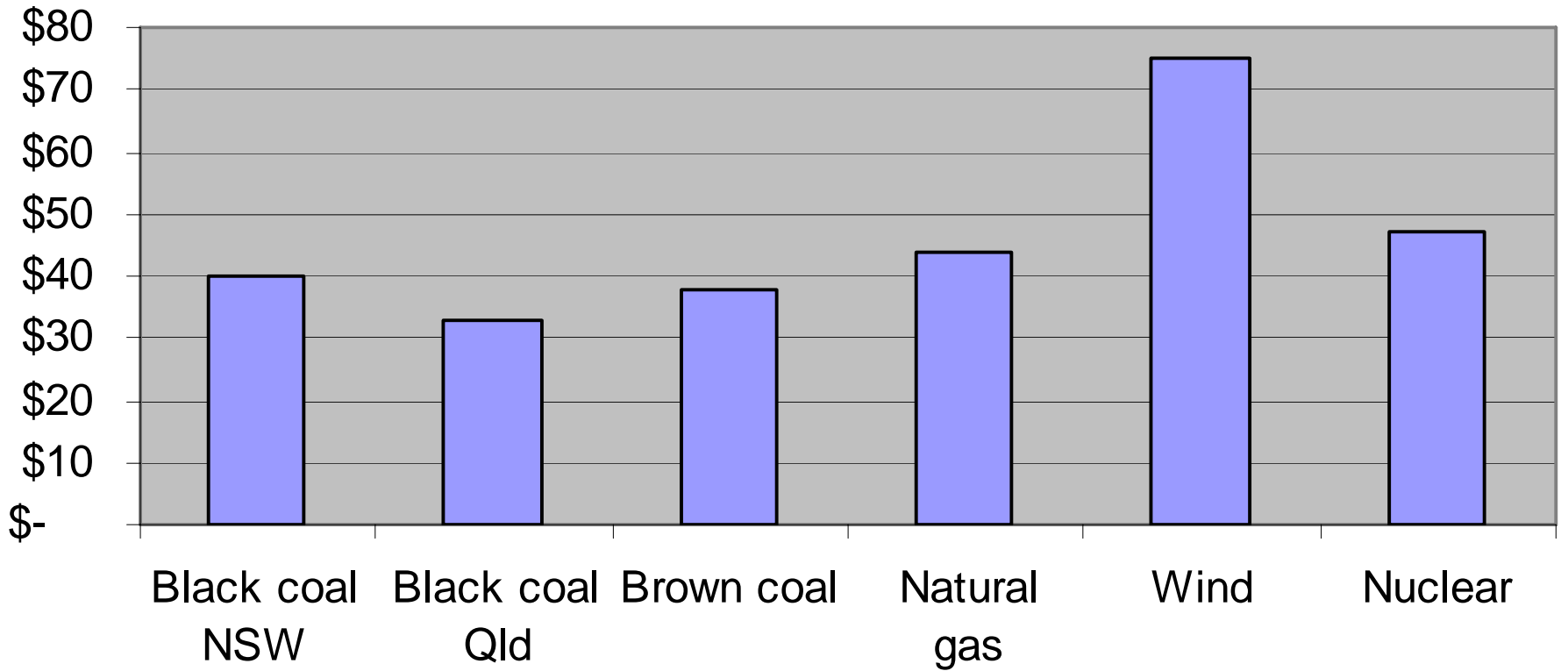
# New power stations

NEM new conventional generation post 2000

	DATE	CAPACITY	OWNER			
nsw	2001	150	National Power (B&B)	private	coal	Redbank
	2008	400	Tru	private	gas	Tallawarra
	2007	100	Macquarie	public	gas	Tomago
	2007	450	WAMBO	private	gas	Wagga
vic	2002	300	Snowy	public	gas	Valley
	2002	150	agl	private	gas	Somerton
	2001	92	alinta	private	gas	Bairnsdale
	2007	90	Hazelwood	private	coal	Valley
	2006	320	Snowy	public	gas	Laverton
	2008	236	Loy Yang	private	coal	Valley
queensland	2001	900	CS	public	coal	Callide
	2002	852	Intergen	private	coal	Surat
	2002	443	Tarong	public/private	coal	Nanango
	2000	288	Enertrade	public	gas	Oakey
	2005	240	Transfield	private	gas	Townsville
	2006	450	Newgen (B&B)	private	gas	Braemar
	2008	57	Q. Gas	private	gas	Chinchilla
	2007	750	CS	Public	coal	Kogan
sa	2000	478	IP	private	gas	Pelican
	2000	84	Origin	private	gas	Ladbroke
	2002	183	agl	private	gas	Adelaide
	2002	92	Origin	private	gas	Torrens

# Electricity Costs

Cost per MWh



# Costs of electricity with a \$130/tonne carbon dioxide tax

