

Protecting your privacy

Who is carrying out this study?

The Melbourne Institute of Applied Economic and Social Research at the University of Melbourne designs and manages the study.

The study is funded by and conducted on behalf of the Australian Government.

Roy Morgan Research, Australia's best-known and longest established market and social research company, has been contracted to conduct the Living in Australia interviews since the beginning of 2009. Roy Morgan Research is highly regarded for its integrity and independence and is famous for the Morgan Poll (Australia's only independent poll).

These organisations are proud to be part of this important study.

What about privacy?

Your information is protected.

The people involved in the study are committed to ethical research and legally bound to ensure your information is secure. All people involved in the project must comply with the *Privacy Act 1998*.

Your identifying information is collected for the purpose of the Living in Australia study. Access to your identifying information will be restricted to those who require it for the purpose of administering or conducting the study.



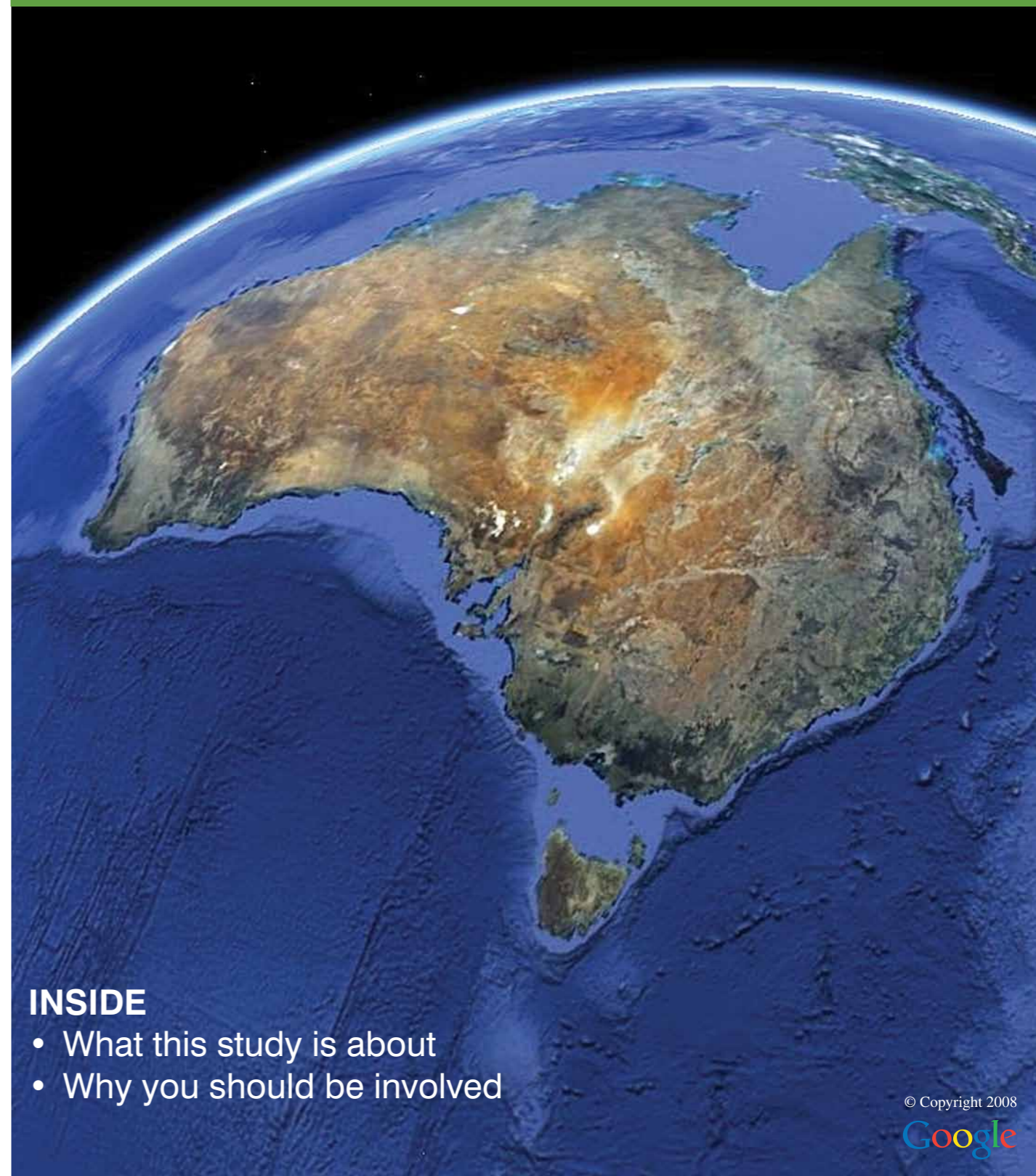
More information

If you want any more information on the study, or would like to know more about how your privacy is protected please telephone free of charge 1800 656 670 or visit us online at www.livinginaustralia.org. If you have any special needs, need help speaking English, or you do not wish to participate this year, please call the number above or tell your Living in Australia interviewer.

If you should have any concerns about the conduct of this study, you are welcome to contact the Executive Officer, Human Research Ethics, The University of Melbourne, by calling 03 8344 2073 or by sending a fax to 03 9347 6739. We hope you will enjoy the study and support us in improving life in Australia!

NEB 060187 181209

QUESTIONS AND ANSWERS



INSIDE

- What this study is about
- Why you should be involved

© Copyright 2008



YOU make all the difference!

What is the study about?

Australia has become part of an international move to have a better understanding of the needs of its people.

This type of knowledge is crucial for good decision making, planning and support for Australians. The Living in Australia study is designed to meet this need.

Having begun in 2001, the study is known as the Living in Australia study and is sometimes referred to in the media as the Household, Income and Labour Dynamics in Australia study (HILDA).

In this study we collect and analyse information from thousands of different families and individuals across Australia. We ask questions about life in Australia including your employment, family relationships, education and wellbeing. This allows researchers to find out, for example, how one area in your life can affect other areas and how people remain the same or change over time. It can also show us how external factors such as Government decisions and world events affect our lives.

Ultimately this study is a source of information to those making economic and social welfare decisions for all Australians.

What's involved?

Taking part in the Living in Australia study involves answering questions about many different topics such as education, employment, retirement, income, family, and how you feel about different aspects of your life.

Your interviewer will ask everyone in your household aged 15 years or older to answer these questions. This usually takes about 35 minutes. One person in your household will also be asked a few questions about the household in general. This usually takes about 10 minutes to answer.



Depending on your circumstances, we will visit you next year to find out about your life in the last 12 months. To keep you up-to-date with the study's news and results, you will also be sent a copy of the Living in Australia newsletter next year. If you would like a copy of the latest newsletter please ask your interviewer.

Is this study voluntary?

Yes, this study is voluntary.

However, because only certain people are chosen to become part of the study, the participation of everyone who is contacted is very important. Your views and experience in Australia are unlike that of anybody else, and your participation is vital to us.

Why is this study so important?

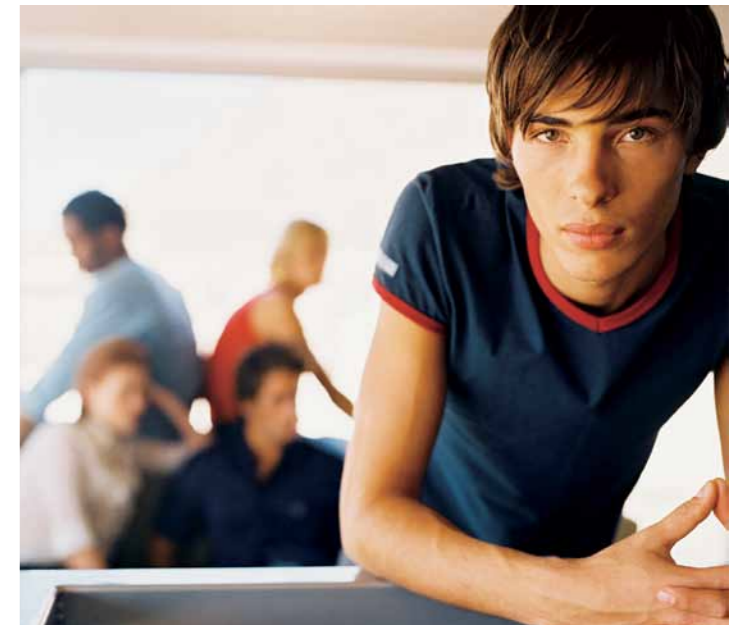
The USA, Germany, Canada, Britain, Israel, Sweden, Korea, Japan, Indonesia and Belgium all have similar long term studies.

The value this has brought to these countries is considerable. Your participation will ensure Australia can also benefit.

The information you provide is having a long term impact on Australia's direction. Every year that you and other households respond, the study increases in value and in its power to influence decision making.

Thanks to your input we now have information on topics such as:

- Planning for our aging population
- How smoking bans have affected the health and smoking behaviour of Australians
- Explaining unemployment in Australia
- The impact of long working hours
- The reasons for Australia's declining birth rate
- The personal and national costs of mental illness
- The division of household chores between men and women
- The effect of part-time work on families and women's careers
- Childcare: accessibility and who uses it
- The effect of household debt on Australians
- Maternity leave arrangements available to Australian women
- The impact of separation and divorce on income
- Job satisfaction of Australians
- How health influences the ability to work



Why have I been asked to take part?

We are interested in Australian households. To understand the ways in which they work, we need to talk to everyone in participating households.

You have been invited to take part in the Living in Australia study because you are living in the household of someone who is participating.

The study began in 2001 and the people who took part in the first year were chosen at random. Everyone living in these households is invited to take part.

Participation is by invitation only. You are one of the lucky people who have been chosen to share your unique experience of living in Australia. This provides you with the opportunity to influence Government and social decisions with hard facts about your life and your household situation.

Our thanks to you

A gift of \$30 is our thanks to you for helping us with this study. Each person who participates will receive \$30. Once everyone in your household has taken part, your household will receive an extra \$30.