



**Greater Sydney**  
Commission

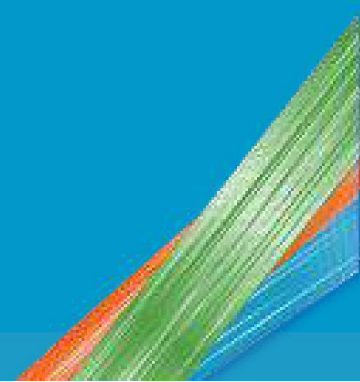
# New Directions for a More Productive Greater Sydney



2017 Economic and Social Outlook Conference

**Sarah Hill, Chief Executive Officer**  
Greater Sydney Commission

20 July 2017



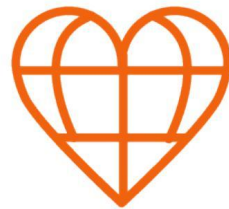
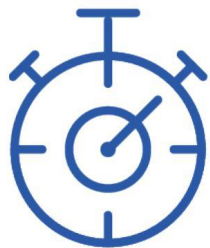


## About us

An independent organisation created to lead the metropolitan planning of Greater Sydney.

## Our remit

To improve the productivity, liveability and sustainability of Greater Sydney.





## Greater Sydney opportunities



- Greater Sydney's GDP \$400.9 billion – almost 25% of Australia's GDP.
- Record infrastructure investment.
- 2036 - 21% of all jobs will be in health and education, up from 19% today.
- Currently almost \$3 billion planned investment in major health facilities.

# The Greater Sydney challenge



- Population increase from around 4.5 million today to 8 million in 2056.



- 725,000 – 825,000 new dwellings needed by 2036 – a 40% increase!
- Cost of purchasing a dwelling in Sydney is about 9.8 times the average household income.



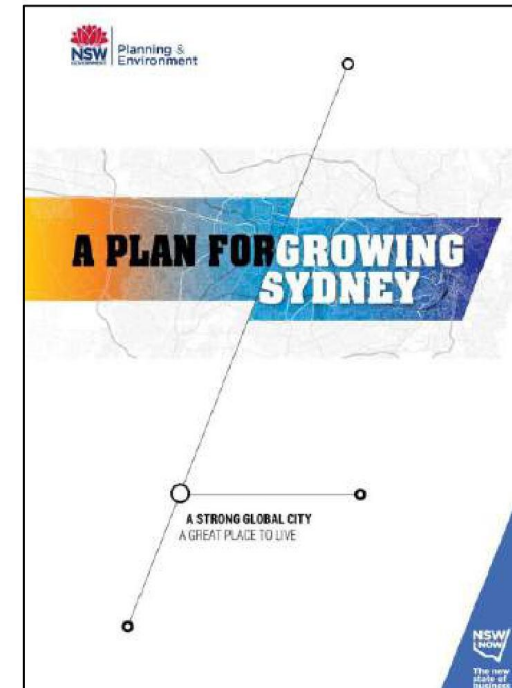
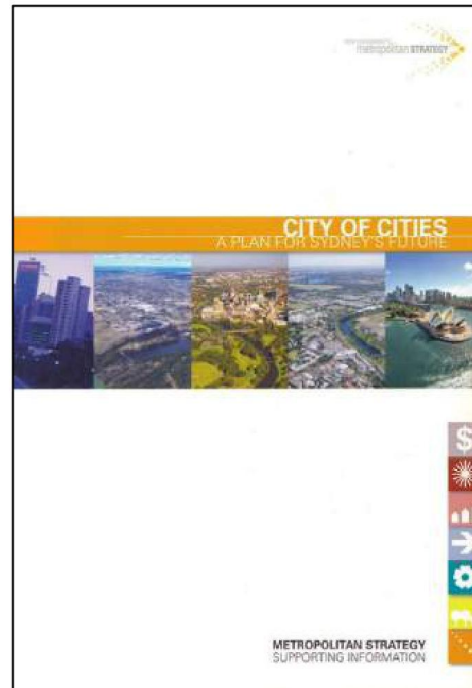
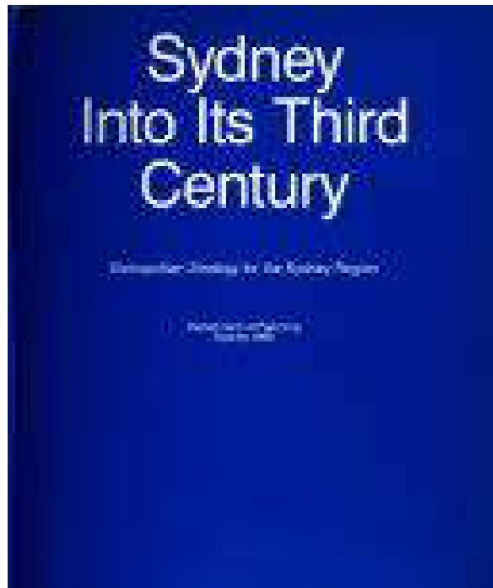
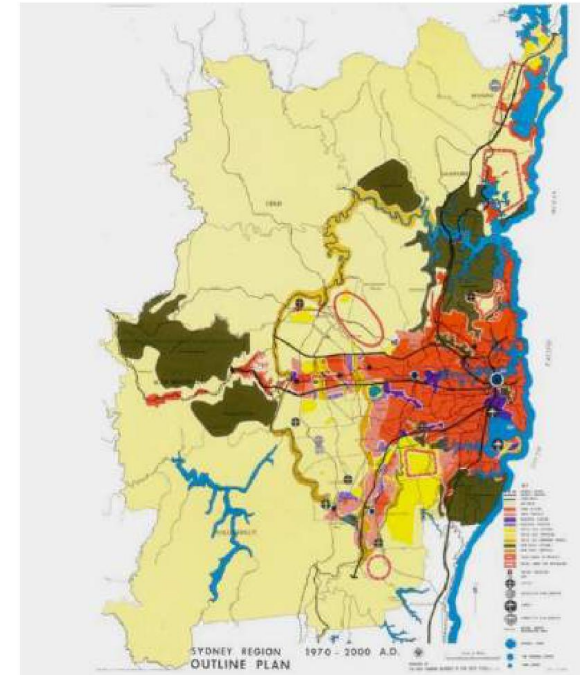
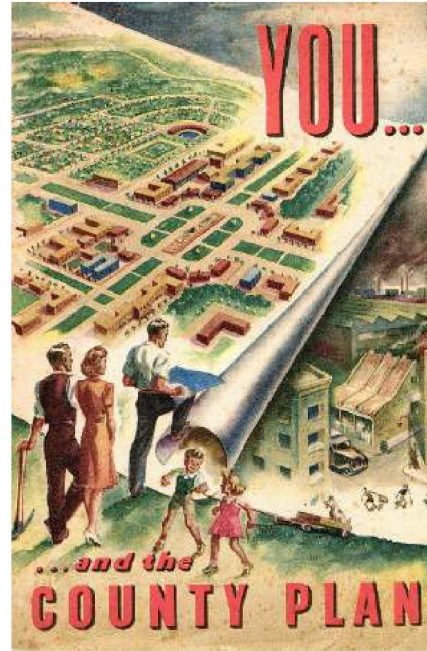
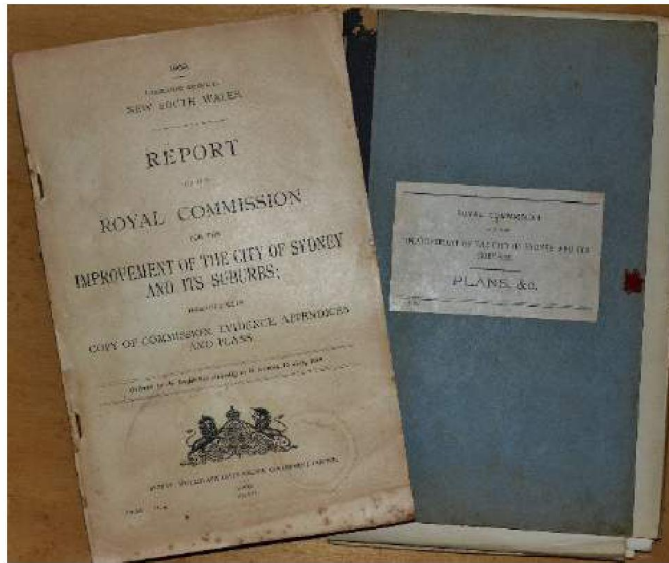
- More than 817,000 additional jobs required by 2036.



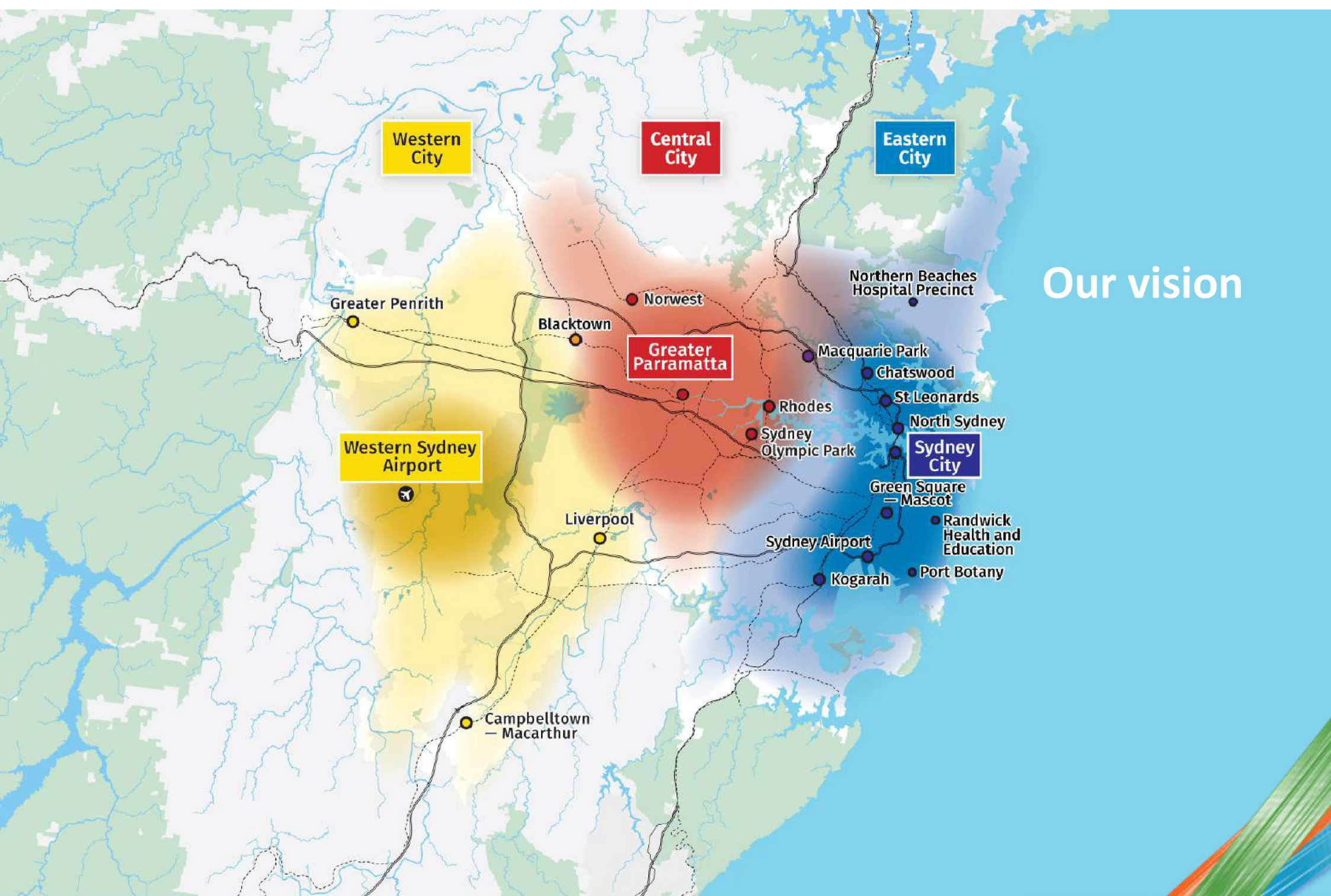
## Rules of city productivity

- Improved efficiency – ie: utilities.
- The city gains a dividend – doubling a city's size gives it a productivity boost of around 15%.
- The number of jobs per capita tracks with population.
- Challenges – specifically a proportional increase in crime.

# Looking back

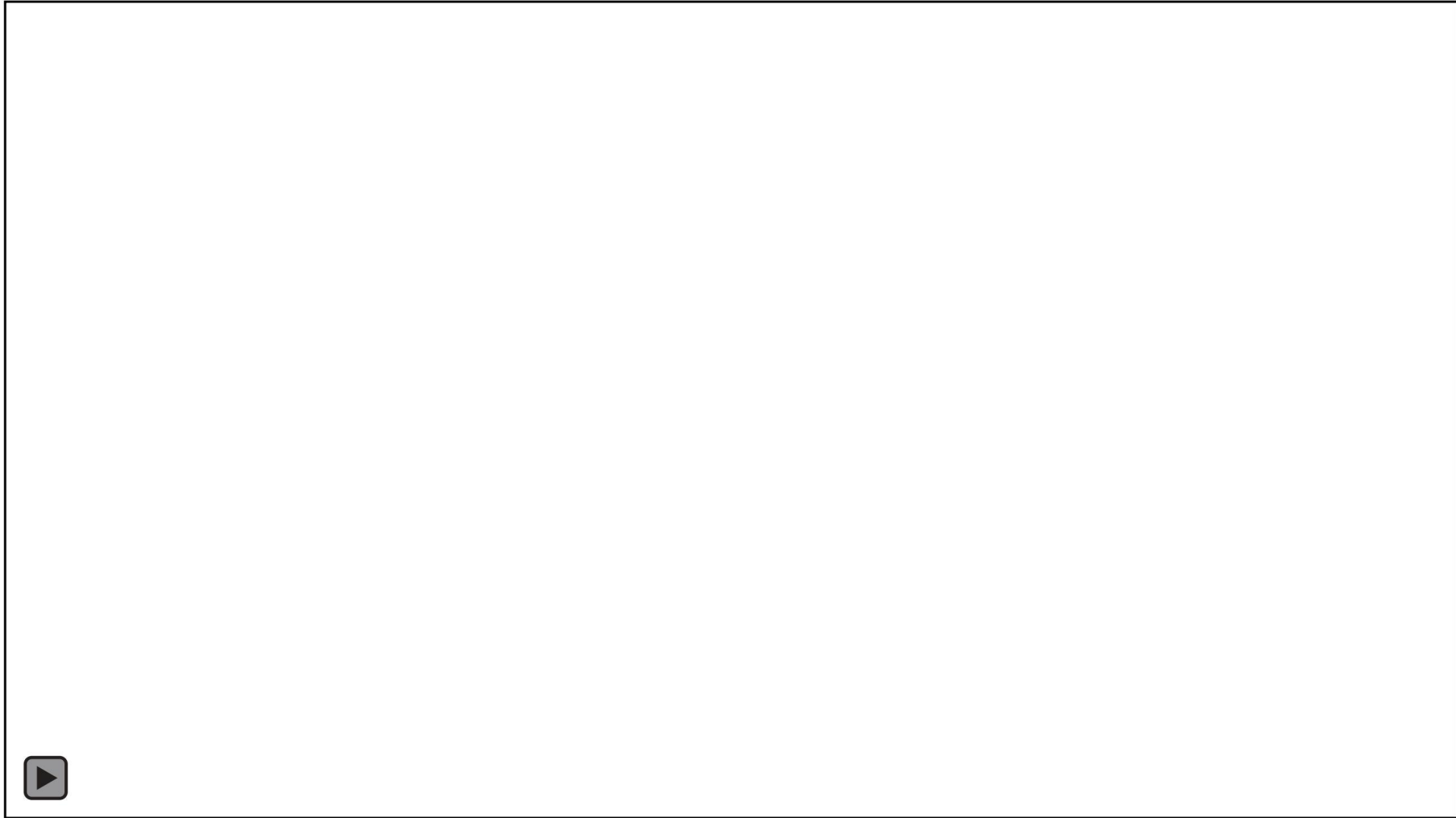




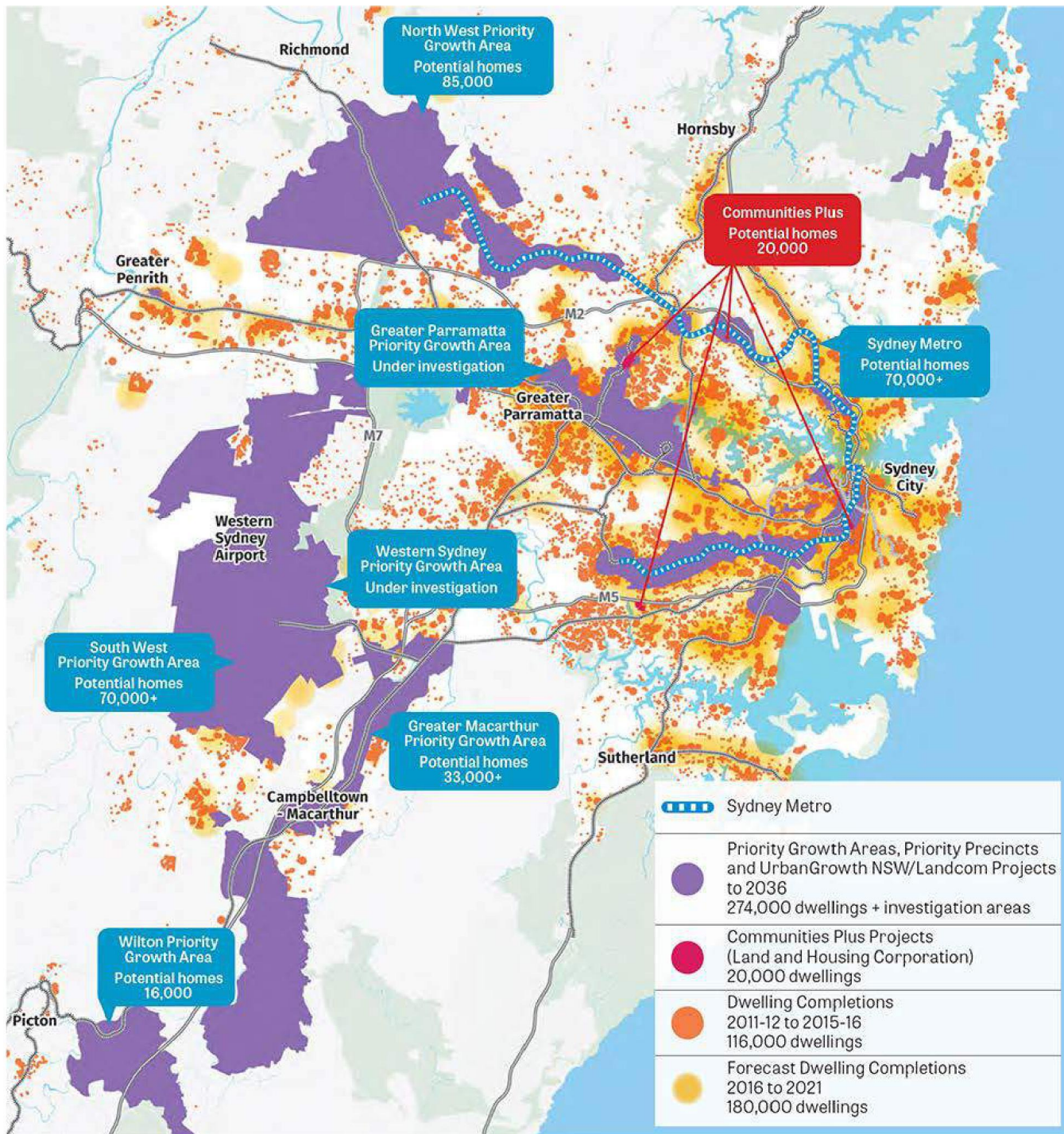




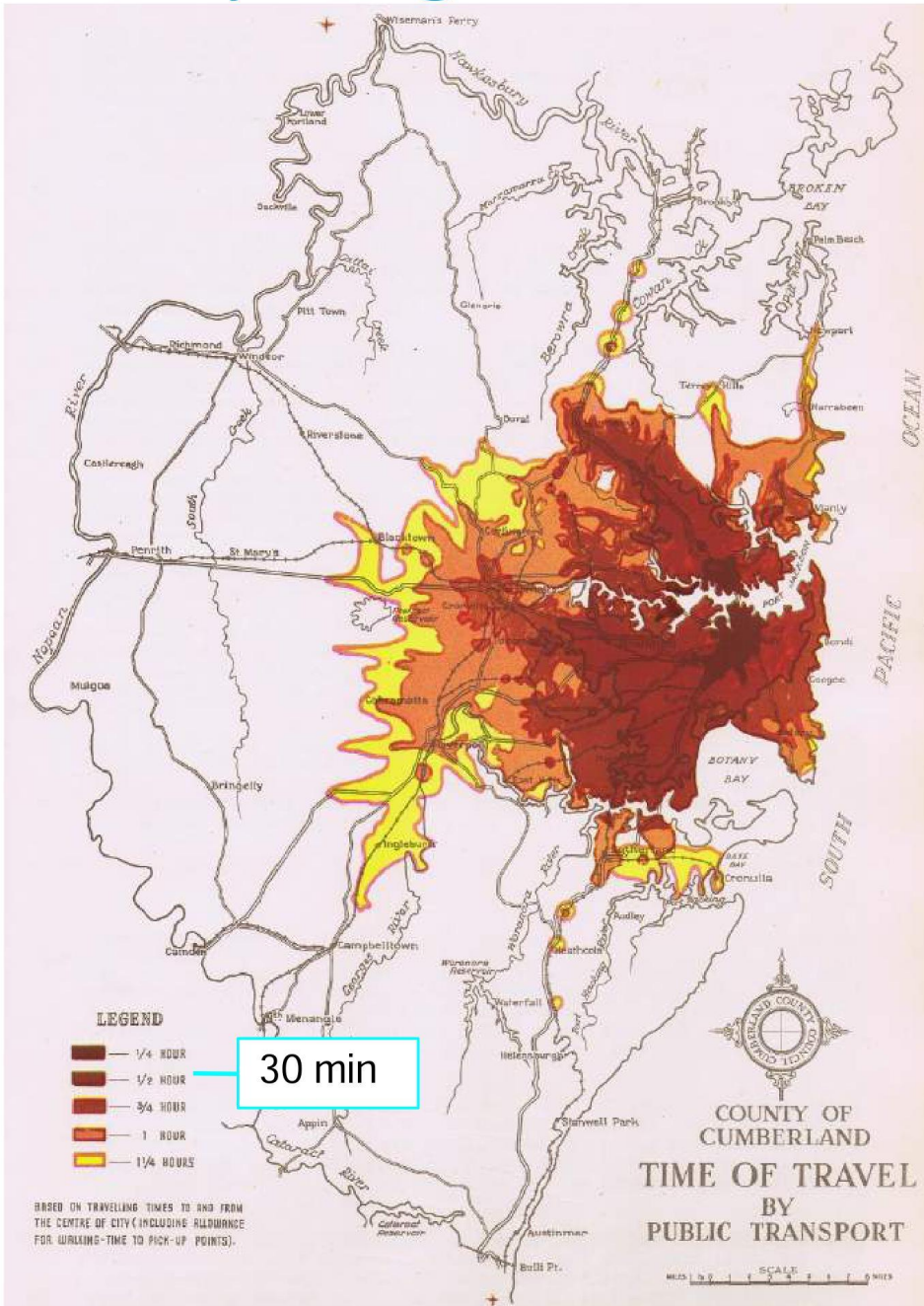
# Directions video



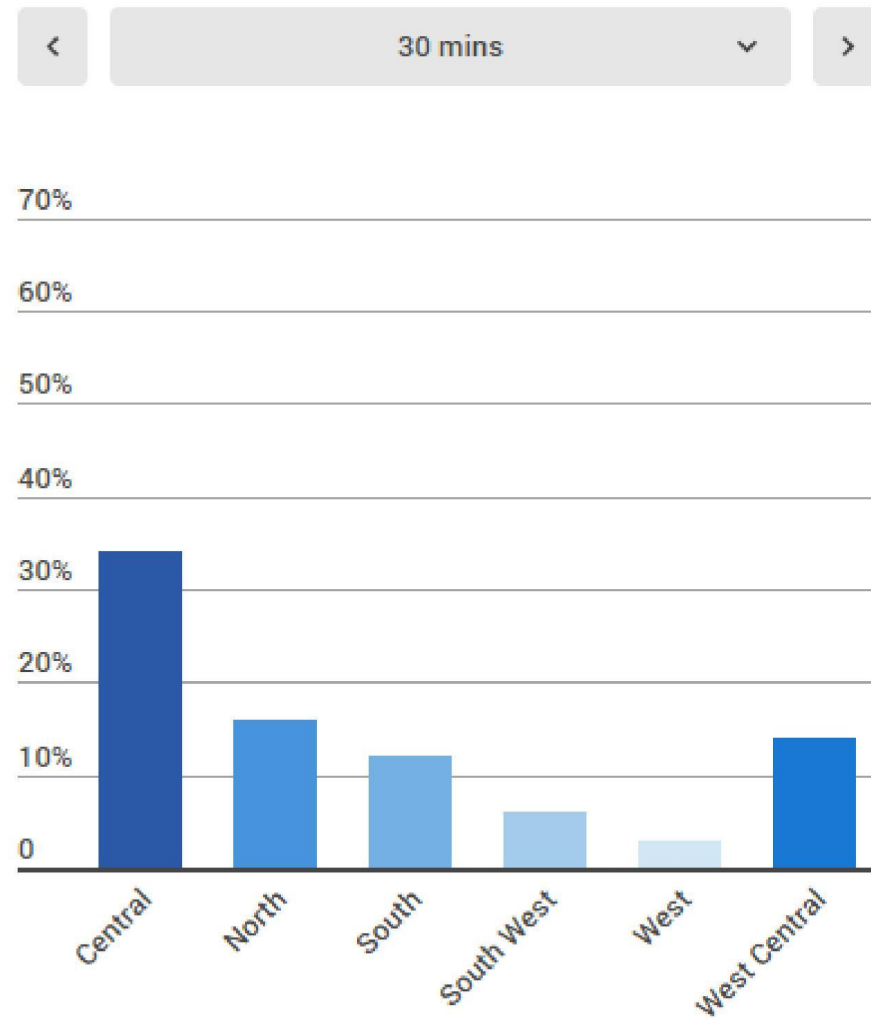
# Direction: Housing the city



# City congestion

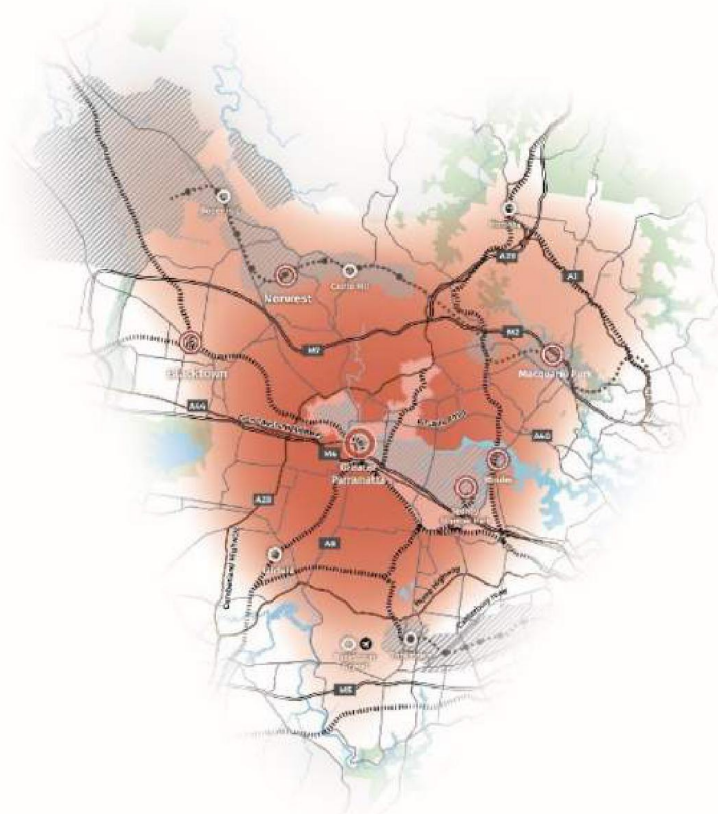
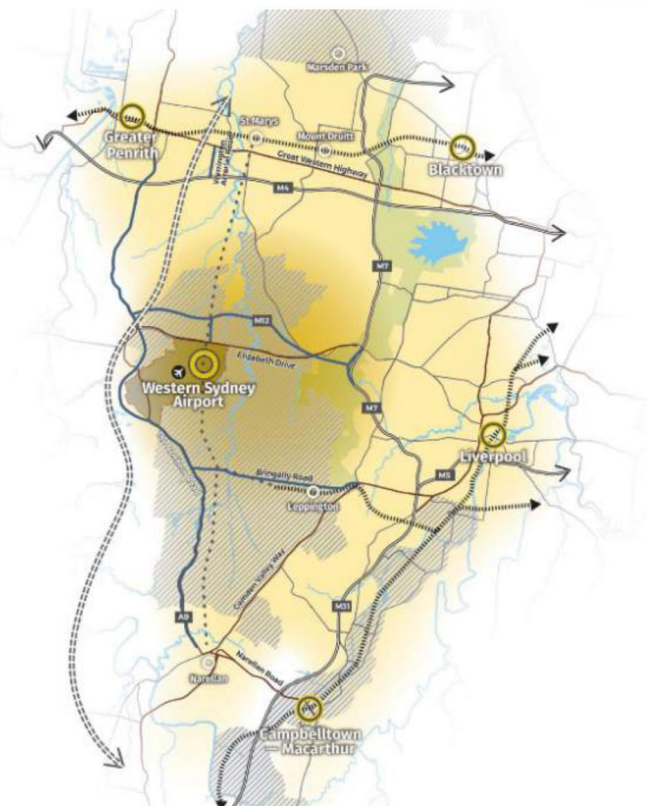


## 30 Minute City





# Direction: Jobs and skills for the city



**By 2056**

The Western City as a trade, logistics, advanced manufacturing, tourism, health, education and science hub.

**By 2036**

The Central City as a health, education, administration, and finance and business services hub.

**2016**

The Eastern City as a financial & professional services, FinTech, & health and education hub.

# Direction: A city supported by infrastructure



- Prioritise infrastructure
- Align forecast growth with infrastructure
  - Current growth - infrastructure priority list
  - Sequence infrastructure
- Fund and finance infrastructure
- Adaptable infrastructure
- Infrastructure is optimised

## Direction: A city of great places



- Liveability – an integral element of our economic competitiveness.
- Great places make Sydney appealing for investment, business and attracting talent.



# For more information:

[www.greater.sydney](http://www.greater.sydney)

## Directions for a Greater Sydney 2017-2056

Directions for a Greater Sydney is the approach produced by the Greater Sydney Commission to better integrate land use and infrastructure to deliver a more productive, liveable and sustainable Greater Sydney to 2056.

Greater Sydney  
Commission

## Growth Infrastructure Compacts

Planning, prioritising and coordinating infrastructure to deliver a Greater Sydney

Greater Sydney  
Commission

Greater Sydney Commission | About us | Planning for Greater Sydney | Get involved | Data and evidence | News | Search

### Data hub

The data hub is a live online profile for our city today. The data hub will be updated regularly so we can track broad trends, identify spatial differences and understand how the city is changing.

- Productivity
- Liveability
- Sustainability

#### What makes a Liveable Greater Sydney?

A liveable city that helps maintain and improve our quality of life. A city with many different places, experiences with greater housing choice.

Year	Population	Population Increase	Population aged 65+
2006	3.8 million	-	-
2016	4.5 million	18% population increase	34% increase in people aged 65+

47,000 more people living in Greater Sydney than 10 years ago  
132,000 more people aged 65+ than 10 years ago





# Connect with us



[/greatersydneycommission](#)



[/gscsydney](#)



[/greatersydneycommission](#)



[/greater-Sydney-commision](#)



[www.greater.sydney](http://www.greater.sydney)