



FACULTY OF
BUSINESS &
ECONOMICS

Melbourne Institute

Session 4C: Inequality

Professor Ross Garnaut AO

Professorial Research Fellow

Faculty of Business and Economics, The University of Melbourne

Chart 1: Income level per capita & its distribution

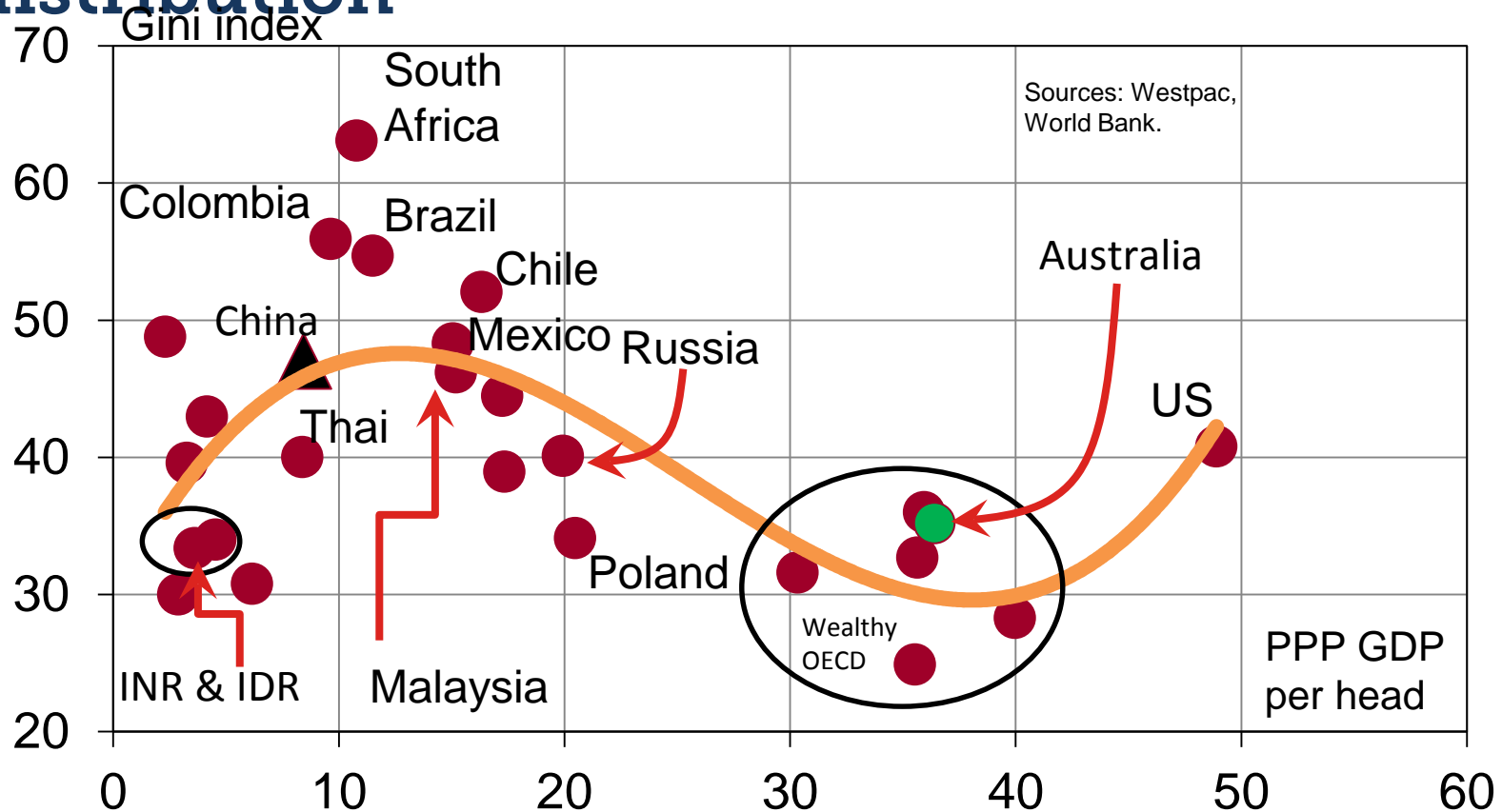
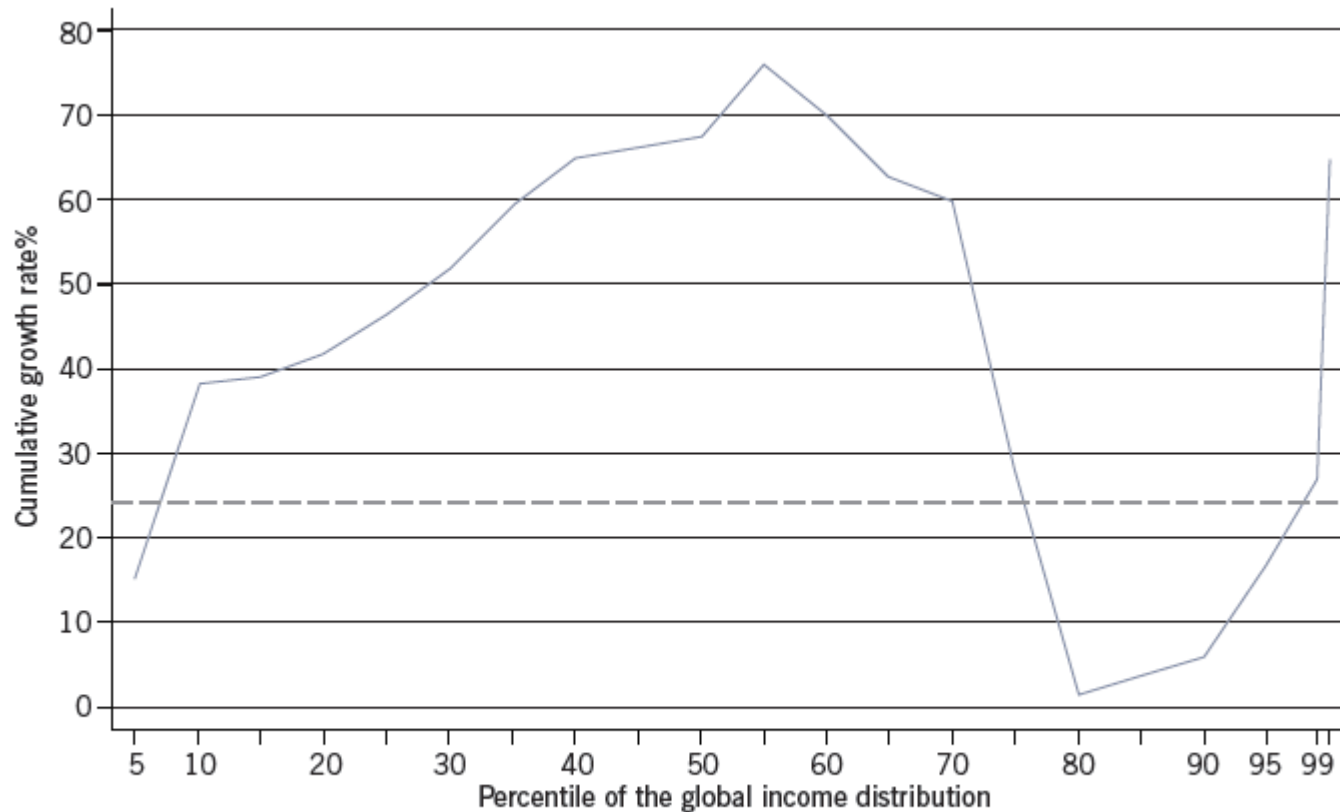


Chart 2: Global growth incidence curve 1988 to 2008



Y-axis displays the growth rate of the fractile average income (in 2005 PPP USD). Weighted by population.
 Growth incidence evaluated at ventile groups (e.g. bottom 5%); top ventile is split into top 1% and 4% between P95 and P99.
 The horizontal line shows the growth rate in the mean of 24.34% (1.1% p.a.).