

The future is here

Delivering the outcomes that matter most to patients

Anthony Gust

19th February 2024



safekindtogether

Northern Health

Department of Health Planning Guidelines

Entity Service Plan Guidelines

March 2023

OFFICIAL

Home Care = HITH & Virtual care

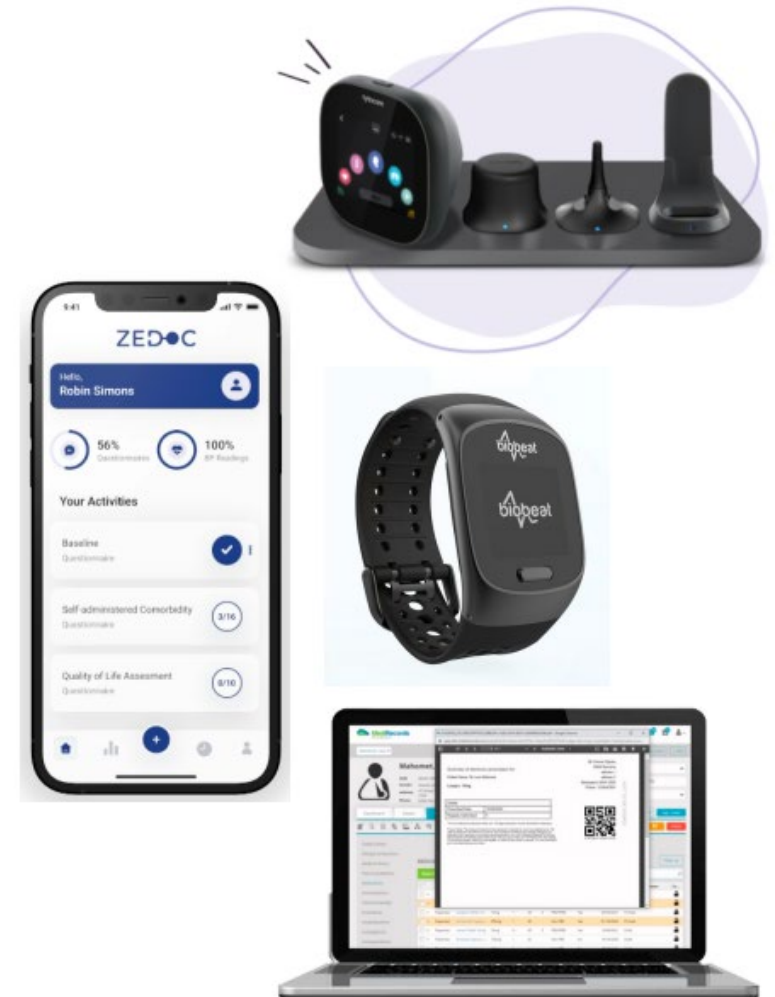
Stay type	Clinical Stream	Major specialist	Metro regional	Rural regional	Rural sub regional	Rural local
Multiday	Acute - Medical	15%	20%	15%	20%	
	Acute - Surgical	15%	20%	15%		
	Subacute – rehabilitation	30%	30%	30%		
	Subacute – GEM	30%	30%	30%		

Occupied bed days = projected total beddays * (100%- % Home based activity)

Tools

1. Video conferring –Telehealth
2. Patient portal- access to med. records
3. Remote Patient monitoring
4. Virtual examination
5. Outcome & Experience
6. Digital Twin
7. Control or command centre
8. ePrescribe
9. Loaned devices
10. Mobile Health Apps
11. Artificial Intelligence (AI)
12. SMS platform
13. EMR
14. Internal communication tools
15. External communication tools
16. Online health information

Range of technologies OR tools



Services

VIRTUAL CARE TRACKING 2023/4

		IDENTIFY/ENGAGE STAKEHOLDERS	IDENTIFY CLINICAL CHAMPIONS	PROJECT PLAN APPROVED	ROLL OUT	EDUCATION & TRAINING	INTERIM EVALUATION
PAM	ONCOLOGY	✓	✓	✓	✓	✓	✗
	HARP	✓	✓	✓	→	✗	✗
	CANCER SURVIVORSHIP	✓	✓	✓	✓	✓	✗
	LUNG CANCER	✓	✓	✓	✓	✓	→
	BACK PAIN	✓	✓	✓	✓	✓	✗
	PLEURAL	✓	✓	✓	✓	✓	✗

		INITIATION PHASE	DEFINITION PHASE	DESIGN PHASE	DEVELOPMENT PHASE	IMPLEMENTATION PHASE	CLOSING & MONITORING
DIGITAL CARE PATHWAY	LUNG CANCER	✓	✓	✓	✓	✓	→
	MUSCULOSKELETAL	✓	✓	✓	→	✗	✗
	PAM	✓	✓	✓	✓	✓	✗
	BACK PAIN	✓	✓	✓	✓	✓	✗
	CONTINENCE	✓	✓	✓	→		
	SMOKING CESSATION	✓	✓	→	✗		
	PLEURAL	✓	→	✗	✗		
	PERIOPERATIVE	✓	→	✗	✗		

		INITIATION PHASE	DEFINITION PHASE	DESIGN PHASE	DEVELOPMENT PHASE
RPM	CARDIAC REHAB	✓	✓	✓	→
	SEVERE ASTHMA	✓	✓	✓	→
	GDM	✓	→	✗	✗
	LYMPHOMA	✓	✓	→	✗
	TOXICITY SYMPTOM	✓	→	✗	✗

NORTHERN HEALTH — CLEO



VICTORIAN VIRTUAL EMERGENCY DEPARTMENT Northern Health

Welcome to the Victorian Virtual Emergency Department (VVED), a public health service to treat non-life-threatening emergencies.

If your situation is life-threatening, please call Triple Zero (000)

Please enter the VVED according to the category which best represents you.

Are you Sick/Unwell?

 Click here

Are you from Ambulance Victoria?

 Click here

Are you an Aged Care Service?

 Click here

Are you a Healthcare Provider?

 Click here

[Learn more about VVED >](#)

Standardising Outcome Sets

International Consortium for Health Outcomes Measurement (ICHOM)

Completed sets

- **Cardiometabolic** - 1. Atrial Fibrillation, 2. Coronary artery disease, 3. Diabetes, 4. Heart failure, 5. Heart valve disease, 6. Hypertension in low and middle income countries, 7. stroke, 8. venous thromboembolism
- **Congenital Anomalies**- 9. Cleft lip & palate, 10. Congenital heart disease, 11. Congenital upper limb anomalies, 12. Craniofacial microsomia, 13. Paediatric facial palsy
- **Gastrointestinal** - 14. Inflammatory bowel disease
- **Infectious Disease** – 15. COVID
- **Life Course** – 16. Adult oral health, 17. Older person, 18. Overall adult health, 19. Overall paediatric health
- **Maternal & Child Health** – 20. Pregnancy & childbirth, 21. Preterm and hospitalised newborn health
- **Mental Health** – 22. Addiction, 23. Autism spectrum disorder, 24. Depression & anxiety. 25. Depression & anxiety for children and young people, 26. eating disorders, 27. Neurodevelopmental disorders, 28. personality disorders, 29. psychotic disorders
- **Musculoskeletal** – 30. Hand & wrist conditions, 31. Hip & knee osteoarthritis, 32. Inflammatory arthritis, 33. Low back pain
- **Neurology** – 34. Dementia, 35. Parkinson’s disease, 36. Paediatric and adult elipesy
- **Oncology** – 37. Advance prostate cancer. 38. Breast cancer, 39. Colorectal cancer, 40. Localized prostate cancer, **41. Lung cancer**
- **Ophthalmological** – 42. Cataract, 43. Macular degeneration
- **Renal, Urogenital** – 44. Chronic Kidney Disease, 45. Overactive Bladder
- **Externally Developed Sets** – 46. Metastatic Breast cancer, 47. Obesity*, 48. Osteogenesis imperfecta

*In development



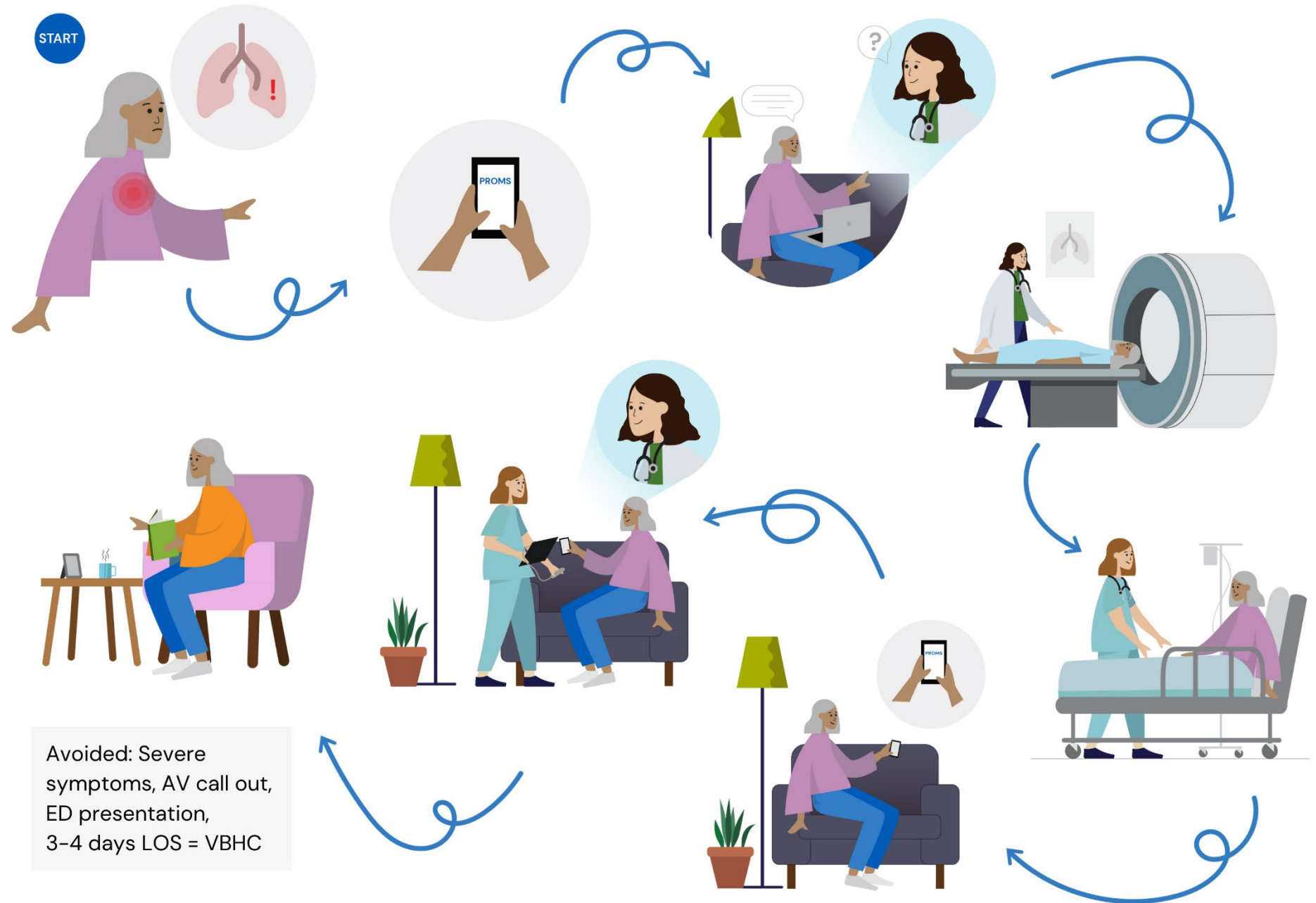
About Us ICHOM Sets Conf

Case Study on the Implementation of the ICHOM Lung Cancer Set with The Clinician and Northern Health

MONDAY, 05 FEBRUARY 2024 / PUBLISHED IN NEWS

The Clinician, with Northern Health, recently went live with a new case study on the implementation of the ICHOM lung cancer set along with the results. We're excited to share this with our community as a real-world example of one of our sets being implemented and the results of doing so. Some background.. At Northern Health, the major provider for healthcare services in Melbourne's rapidly growing outer north, Dr Katharine See has set up the Lung Mass Clinic, a cancer service committed to delivering the highest quality of care to its patients and community. Katharine and her team partnered with The Clinician to develop a digital care pathway that would enable the systematic collection and analysis of the outcomes that matter most to patients, using patient-reported outcome measures (PROMs). To read the full case study, go [here](#).

Patient Story...



Data

Outcomes, Experience,
Vitals
Costing



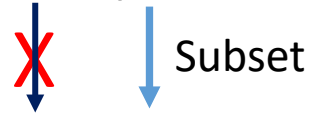
Medical record (coded)
Costing



Victorian Department of Health

(DoH)

CVDL - VAHI



Commonwealth –Department of Health

AIHW (link), IHACPA (funding), ACSQHC (Quality)



Way forward

- Develop clinical pathways with outcomes
- Gather outcome and cost data
- Send to Departments of Health
- Build outcome framework—
 - ORG similar to DRG with separate costing
OR
 - Include digital cost bucket with the DRG
- Move from volume to value— bundled payment for conditions
- Blend activity based funding with new
outcome based funding